

# PARTS LIST

## DPW

*1301S*

*1301W*

*1302S*

*1302W*

## Foreword

### Thank you for purchasing a Kansai Special DPW Series sewing machine.

Use this Parts List for easy identification and ordering of DPW-1301 and 1302 series repair and replacement parts. Drawings show individual components and their composite parts.

Underneath the drawings, or on the page opposite, you will find listings for reference numbers, parts names and quantities required.

By referring to the index on pages 14-15, you can easily find the drawings and names for any parts number.

This Parts List is valid for machines manufactured after December 1, 1977. Due to frequent design improvements, components and parts numbers may be changed in the future.

When ordering, please specify the following:

| (Example) | Model       | Ref. No. | Parts No. | Q'ty   |
|-----------|-------------|----------|-----------|--------|
|           | (DPW-1302W) | (P10.33) | (03-111)  | (1pc.) |

In the drawings, the parts shown in boxes indicate a set of parts.

When ordering, please specify the assembly number.

| (Example) | Model       | Ref. No.  | Assembly No. | Unit    |
|-----------|-------------|-----------|--------------|---------|
|           | (DPW-1302S) | (P4.32-D) | (40-122)     | (1 set) |

## パーツリストご利用に際して

### DPWシリーズ製品をお買い上げいただき有難うございます。

このパーツリストは、DPW-1301・1302シリーズミシンの修理用部品が容易にご利用いただけるよう編集されております。機構別に各頁に収録され、部品図解頁の下側、又は右頁には、参照番号、部品番号、名称、使用数量の順で記載されています。

又、14頁、15頁には部品索引表を記載しておりますので、部品番号のみで、その図解、名称などが容易に引き出せます。

本パーツリストに基き部品ご注文の際は、必ず部品番号を明示して下さい。

| (例) | 機種名         | 参照番号     | 部品番号     | 数量   |
|-----|-------------|----------|----------|------|
|     | (DPW-1302W) | (P10.33) | (03-111) | (1個) |

部品図解中で枠内の部品は、複数の部品が組合されたセット-部品です。

セット部品ご入用の際は、アッセンブリー番号をご使用下さい。

| (例) | 機種名         | 参照番号      | アッセンブリー番号 | 数量   |
|-----|-------------|-----------|-----------|------|
|     | (DPW-1302S) | (P4・32-D) | (40-122)  | (1組) |

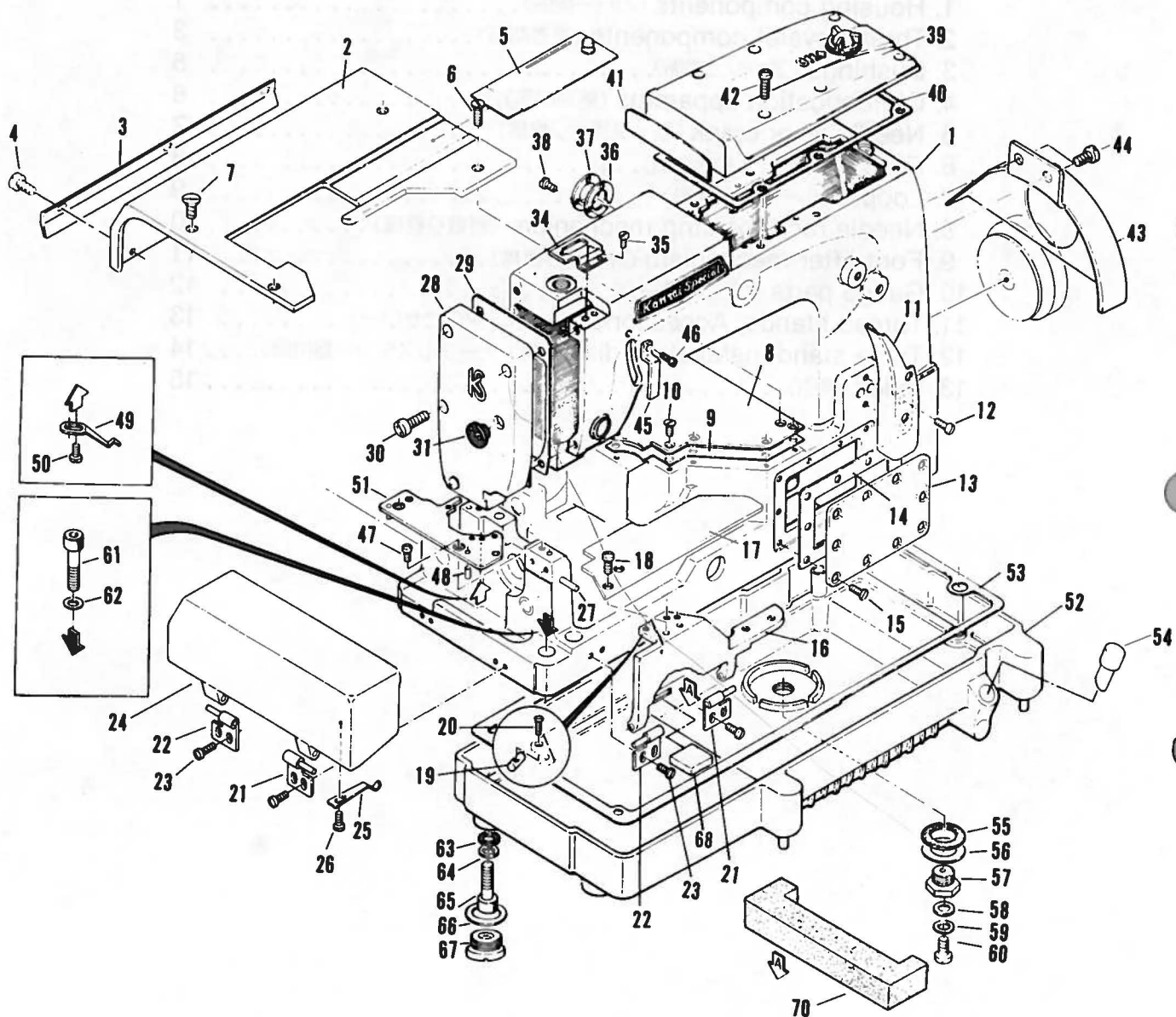
本パーツリストは、1977年12月現在製造中のミシンを基に作成されております。

部品番号、部品形状等は設計変更により、変わる場合があります。

## Contents

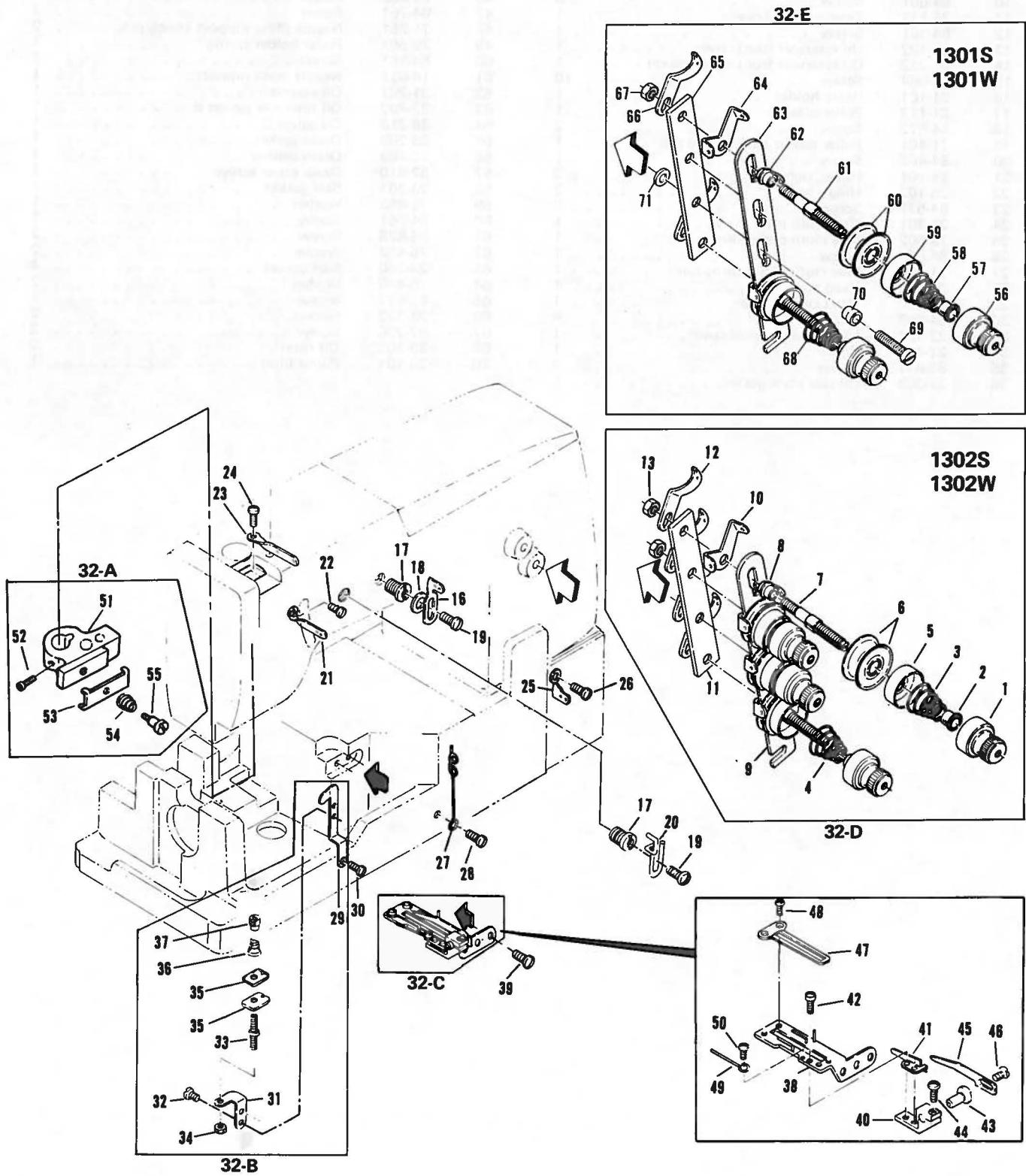
|   |    |
|---|----|
| 1. Housing components (カバー関係).....                      | 1  |
| 2. Thread eyelet components (糸道関係).....                 | 3  |
| 3. Bushings (ブッシュ関係).....                               | 5  |
| 4. Oil lubrication apparatus (給油関係).....                | 6  |
| 5. Needle lever crank (弓・クランク機構).....                   | 7  |
| 6. Feed rocker (送り台機構).....                             | 8  |
| 7. Looper (ルーパー台機構).....                                | 9  |
| 8. Needle reciprocating mechanism (針振り機構).....          | 10 |
| 9. Foot lifter mechanism (押え上げ機構).....                  | 11 |
| 10. Gauge parts (ゲージ関係).....                            | 12 |
| 11. Thread stands, Accessories (糸立て・アクセサリ).....         | 13 |
| 12. Table stand installation diagram (テーブルスタンド据付図)..... | 14 |
| 13. Index (索引).....                                     | 15 |

# 1. Housing components (カバー関係)



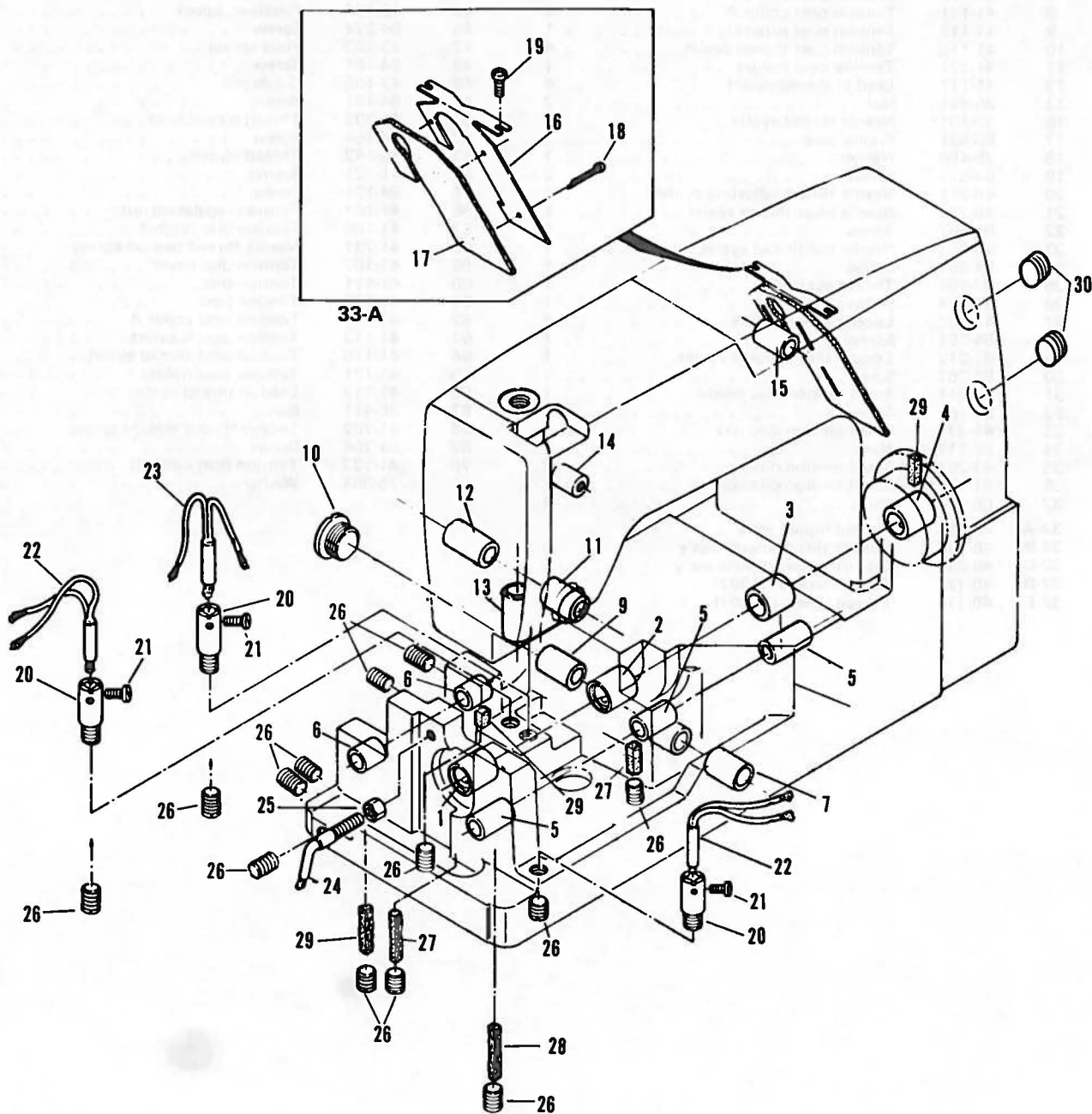
| Ref. No. | Part No. | Part Name                                  | Q'ty | Ref. No. | Part No. | Part Name                                  | Q'ty |
|----------|----------|--|------|----------|----------|--|------|
| 1        | 22-351   | Arm bed . . . . .                          | 1    | 37       | 39-108   | Oil seal plate B . . . . .                 | 1    |
| 2        | 21-501   | Upper cloth plate . . . . .                | 1    | 38       | 84-362   | Screw . . . . .                            | 3    |
| 3        | 21-441   | Supporting cover . . . . .                 | 1    | 39       | 21-210   | Crank chamber oil cover F . . . . .        | 1    |
| 4        | 84-574   | Screw . . . . .                            | 3    | 40       | 23-208   | Crank chamber oil cover gasket F . . . . . | 1    |
| 5        | 21-521   | Slide plate A . . . . .                    | 1    | 41       | 23-207   | Oil cover gasket . . . . .                 | 1    |
| 6        | 84-861   | Screw A . . . . .                          | 2    | 42       | 84-566   | Screw . . . . .                            | 6    |
| 7        | 84-862   | Screw B . . . . .                          | 2    | 43       | 21-402   | Pulley cover . . . . .                     | 1    |
| 8        | 21-513   | Oil reservoir top cover . . . . .          | 1    | 44       | 84-571   | Screw . . . . .                            | 2    |
| 9        | 23-223   | Oil reservoir top cover . . . . .          | 1    | 45       | 21-711   | Needle lever eyelet safety plate . . . . . | 1    |
| 10       | 84-661   | Screw . . . . .                            | 8    | 46       | 84-363   | Screw . . . . .                            | 1    |
| 11       | 21-131   | Tension post cover . . . . .               | 1    | 47       | 84-761   | Screw . . . . .                            | 2    |
| 12       | 84-361   | Screw . . . . .                            | 1    | 48       | 71-251   | Needle plate support knock pin . . . . .   | 2    |
| 13       | 21-122   | Oil reservoir front cover . . . . .        | 1    | 49       | 79-501   | Ruler holder spring . . . . .              | 1    |
| 14       | 23-232   | Oil reservoir front cover gasket . . . . . | 1    | 50       | 84-361   | Screw . . . . .                            | 2    |
| 15       | 84-664   | Screw . . . . .                            | 10   | 51       | 14-031   | Needle plate support . . . . .             | 1    |
| 16       | 21-101   | Ruler holder . . . . .                     | 1    | 52       | 31-203   | Oil reservoir . . . . .                    | 1    |
| 17       | 21-112   | Puller plate A . . . . .                   | 1    | 53       | 23-402   | Oil reservoir gasket B . . . . .           | 1    |
| 18       | 84-572   | Screw . . . . .                            | 2    | 54       | 39-213   | Oil gauge C . . . . .                      | 1    |
| 19       | 71-401   | Puller holder back spring rod . . . . .    | 1    | 55       | 23-299   | Drain gasket . . . . .                     | 1    |
| 20       | 84-462   | Screw . . . . .                            | 1    | 56       | 75-469   | Drain washer . . . . .                     | 1    |
| 21       | 25-101   | Hinge, right . . . . .                     | 2    | 57       | 87-810   | Drain cover screw . . . . .                | 1    |
| 22       | 25-102   | Hinge, left . . . . .                      | 2    | 58       | 23-301   | Seal gasket . . . . .                      | 1    |
| 23       | 84-571   | Screw . . . . .                            | 8    | 59       | 75-453   | Washer . . . . .                           | 1    |
| 24       | 21-301   | Side cloth plate . . . . .                 | 1    | 60       | 84-761   | Screw . . . . .                            | 1    |
| 25       | 79-502   | Side cloth plate spring . . . . .          | 1    | 61       | 85-628   | Screw . . . . .                            | 2    |
| 26       | 84-571   | Screw . . . . .                            | 1    | 62       | 75-452   | Washer . . . . .                           | 2    |
| 27       | 71-301   | Side cloth plate spring pin . . . . .      | 1    | 63       | 23-260   | Seal gasket . . . . .                      | 4    |
| 28       | 21-320   | Head cover . . . . .                       | 1    | 64       | 75-446   | Washer . . . . .                           | 2    |
| 29       | 23-220   | Head cover gasket . . . . .                | 1    | 65       | 85-627   | Screw . . . . .                            | 2    |
| 30       | 84-566   | Screw . . . . .                            | 4    | 66       | 23-302   | Gasket . . . . .                           | 2    |
| 31       | 23-161   | Head cover oil seal cover . . . . .        | 1    | 67       | 87-756   | Screw . . . . .                            | 2    |
| 34       | 21-431   | Cover . . . . .                            | 1    | 68       | 39-163   | Oil filter . . . . .                       | 2    |
| 35       | 85-611   | Screw . . . . .                            | 2    | 70       | 39-161   | Pump filter . . . . .                      | 1    |
| 36       | 23-263   | Oil seal plate gasket . . . . .            | 1    |          |          |  |      |

## 2. Thread eyelet components (糸道関係)



| Ref. No. | Part No. | Part Name                                | Q'ty | Ref. No. | Part No. | Part Name                              | Q'ty |
|----------|----------|--|------|----------|----------|--|------|
| 1        | 41-101   | Tension regulating nut . . . . .         | 4    | 38       | 43-101   | Cast-off support plate . . . . .       | 1    |
| 2        | 41-105   | Tension disc ratchet . . . . .           | 4    | 39       | 84-571   | Screw . . . . .                        | 2    |
| 3        | 41-701   | Needle thread tension spring . . . . .   | 2    | 40       | 43-111   | Fixing base . . . . .                  | 1    |
| 4        | 41-702   | Looper thread tension spring . . . . .   | 2    | 41       | 43-103   | Retainer, lower . . . . .              | 1    |
| 5        | 41-107   | Tension disc cover . . . . .             | 4    | 42       | 84-162   | Screw . . . . .                        | 2    |
| 6        | 41-111   | Tension disc . . . . .                   | 8    | 43       | 43-112   | Fixing pin . . . . .                   | 2    |
| 7        | 41-172   | Tension post . . . . .                   | 4    | 44       | 84-363   | Screw . . . . .                        | 1    |
| 8        | 41-131   | Tension post collar A . . . . .          | 4    | 45       | 43-104   | Retainer, upper . . . . .              | 1    |
| 9        | 41-113   | Tension post support . . . . .           | 1    | 46       | 84-374   | Screw . . . . .                        | 1    |
| 10       | 41-115   | Tension post thread eyelet . . . . .     | 4    | 47       | 43-102   | Plate spring . . . . .                 | 1    |
| 11       | 41-121   | Tension post holder . . . . .            | 1    | 48       | 84-161   | Screw . . . . .                        | 2    |
| 12       | 41-117   | Lead in thread eyelet . . . . .          | 4    | 49       | 43-105   | Guide pin . . . . .                    | 1    |
| 13       | 86-411   | Nut . . . . .                            | 2    | 50       | 84-161   | Screw . . . . .                        | 1    |
| 16       | 45-101   | Needle thread eyelet . . . . .           | 1    | 51       | 41-303   | Thread nipper base . . . . .           | 1    |
| 17       | 85-531   | Fixing base . . . . .                    | 2    | 52       | 84-364   | Screw . . . . .                        | 1    |
| 18       | 75-456   | Washer . . . . .                         | 1    | 53       | 45-142   | Thread nipper . . . . .                | 1    |
| 19       | 84-571   | Screw . . . . .                          | 2    | 54       | 41-721   | Spring . . . . .                       | 1    |
| 20       | 45-211   | Needle thread adjusting eyelet . . . . . | 1    | 55       | 84-171   | Screw . . . . .                        | 1    |
| 21       | 45-121   | Needle lever thread eyelet . . . . .     | 1    | 56       | 41-101   | Tension regulating nut . . . . .       | 2    |
| 22       | 84-361   | Screw . . . . .                          | 1    | 57       | 41-105   | Tension disc ratchet . . . . .         | 2    |
| 23       | 45-131   | Needle bar thread eyelet . . . . .       | 1    | 58       | 41-701   | Needle thread tension spring . . . . . | 1    |
| 24       | 84-361   | Screw . . . . .                          | 1    | 59       | 41-107   | Tension disc cover . . . . .           | 2    |
| 25       | 47-101   | Thread eyelet 2 . . . . .                | 1    | 60       | 41-111   | Tension disc . . . . .                 | 4    |
| 26       | 84-374   | Screw . . . . .                          | 1    | 61       | 41-172   | Tension post . . . . .                 | 2    |
| 27       | 47-202   | Looper thread guide . . . . .            | 1    | 62       | 41-131   | Tension post collar A . . . . .        | 2    |
| 28       | 84-361   | Screw . . . . .                          | 1    | 63       | 41-113   | Tension post support . . . . .         | 1    |
| 29       | 41-212   | Looper thread guide eyelet . . . . .     | 1    | 64       | 41-115   | Tension post thread eyelet . . . . .   | 2    |
| 30       | 84-361   | Screw . . . . .                          | 1    | 65       | 41-121   | Tension post holder . . . . .          | 1    |
| 31       | 41-211   | Small tension disc holder . . . . .      | 1    | 66       | 41-117   | Lead in thread eyelet . . . . .        | 2    |
| 32       | 84-161   | Screw . . . . .                          | 2    | 67       | 86-411   | Nut . . . . .                          | 1    |
| 33       | 41-271   | Small tension disc rod . . . . .         | 1    | 68       | 41-702   | Looper thread tension spring . . . . . | 1    |
| 34       | 86-211   | Nut . . . . .                            | 1    | 69       | 84-764   | Screw . . . . .                        | 1    |
| 35       | 41-201   | Small tension disc . . . . .             | 2    | 70       | 41-132   | Tension post collar B . . . . .        | 1    |
| 36       | 41-721   | Small tension disc spring . . . . .      | 1    | 71       | 75-381   | Washer . . . . .                       | 1    |
| 37       | 86-251   | Nut . . . . .                            | 1    |          |          |  |      |
| 32-A     | 40-531   | Thread nipper ass'y                      |      |          |          |  |      |
| 32-B     | 40-130   | Looper thread nipper ass'y               |      |          |          |  |      |
| 32-C     | 40-331   | Cast-off support plate ass'y             |      |          |          |  |      |
| 32-D     | 40-122   | Thread tension (1302)                    |      |          |          |  |      |
| 32-E     | 40-111   | Thread tension (1301)                    |      |          |          |  |      |

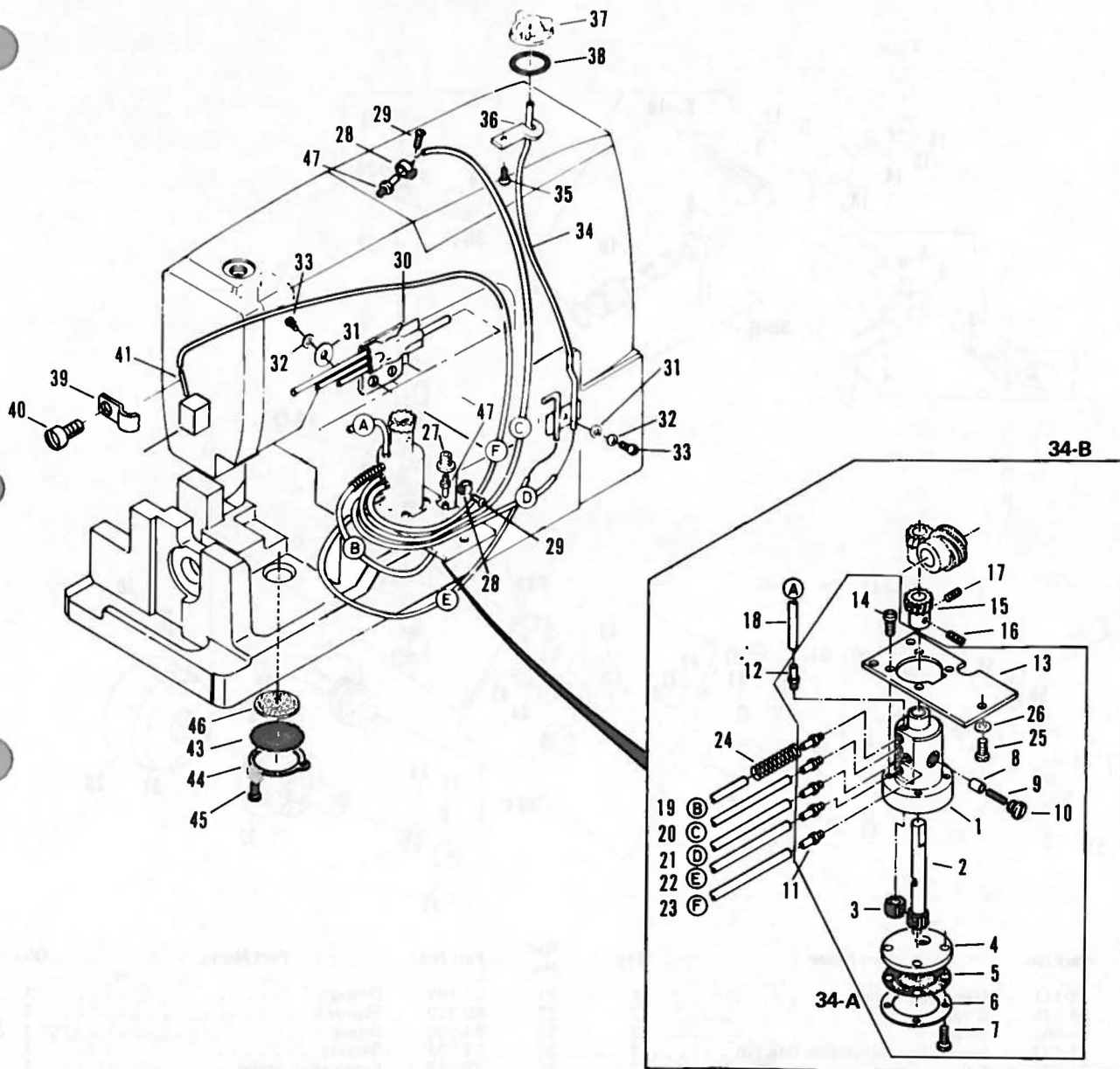
### 3. Bushings (ブッシュ関係)



| Ref. No. | Part No. | Part Name                                    | Q'ty | Ref. No. | Part No. | Part Name                                   | Q'ty |
|----------|----------|--|------|----------|----------|---|------|
| 1        | 81-711   | Main shaft bushing A . . . . .               | 1    | 16       | 39-128   | Fence B . . . . .                           | 1    |
| 2        | 81-107   | Main shaft bushing B . . . . .               | 1    | 17       | 23-378   | Fence felt B . . . . .                      | 1    |
| 3        | 81-713   | Main shaft bushing C . . . . .               | 1    | 18       | 93-621   | Pin . . . . .                               | 7    |
| 4        | 81-112   | Flange bushing . . . . .                     | 1    | 19       | 84-164   | Screw . . . . .                             | 2    |
| 5        | 81-736   | Looper rocker shaft bushing A . . . . .      | 3    | 20       | 35-191   | Oil tube support . . . . .                  | 3    |
| 6        | 81-751   | Feed rocker shaft bushing A . . . . .        | 2    | 21       | 84-365   | Screw . . . . .                             | 3    |
| 7        | 81-333   | Looper drive lever shaft bushing A . . . . . | 1    | 22       | 35-101   | Feed rocker tubing A . . . . .              | 2    |
| 8        | 81-134   | Looper drive lever shaft bushing B . . . . . | 1    | 23       | 35-102   | Feed rocker tubing B . . . . .              | 1    |
| 9        | 81-135   | Looper drive lever shaft bushing C . . . . . | 1    | 24       | 35-111   | Feed rocker eccentric link tubing . . . . . | 1    |
| 10       | 87-311   | Screw . . . . .                              | 1    | 25       | 86-501   | Nut . . . . .                               | 1    |
| 11       | 81-151   | Needle bar frame shaft bushing . . . . .     | 1    | 26       | 85-501   | Oil tube holder screw B . . . . .           | 13   |
| 12       | 81-151   | Needle bar frame shaft bushing . . . . .     | 1    | 27       | 23-381   | Felt, large . . . . .                       | 2    |
| 13       | 81-153   | Presser bar bushing . . . . .                | 1    | 28       | 23-382   | Felt, medium . . . . .                      | 1    |
| 14       | 81-201   | Bushing for spring set screw . . . . .       | 1    | 29       | 23-383   | Felt, small . . . . .                       | 3    |
| 15       | 81-255   | Presser foot lifter lever bushing . . . . .  | 1    | 30       | 85-341   | Screw . . . . .                             | 2    |
| 33-A     | 30-931   | Oil Fence ass'y                              |      |          |          |   |      |



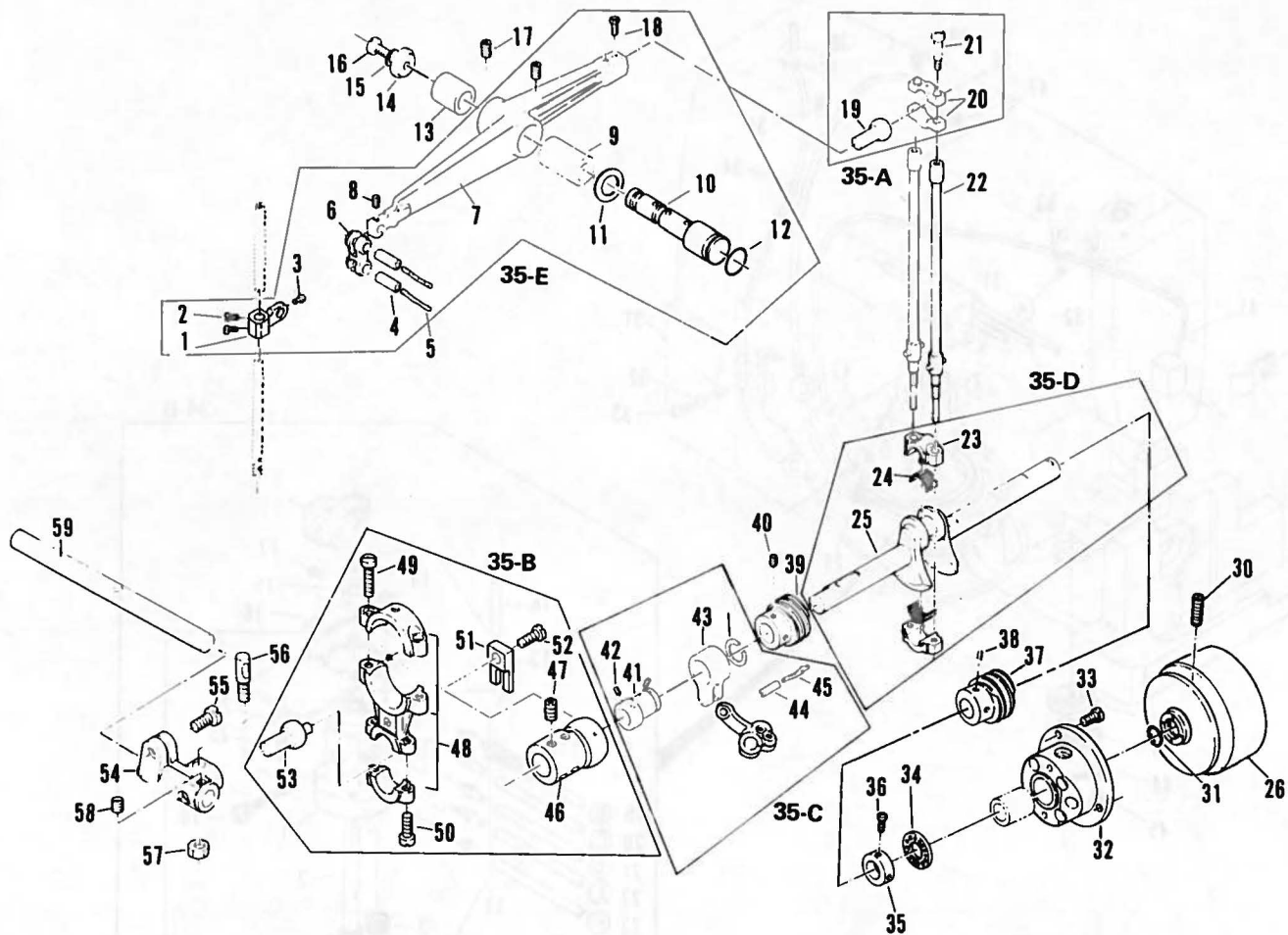
# 4. Oil lubrication apparatus (給油関係)



| Ref. No. | Part No. | Part Name             | Q'ty |
|----------|----------|-----------------------|------|
| 1        | 31-401   | Oil pump body C       | 1    |
| 2        | 31-406   | Gear (main)           | 1    |
| 3        | 31-407   | Gear (support)        | 1    |
| 4        | 31-403   | Pump body cover C     | 1    |
| 5        | 31-404   | Pump body mesh        | 1    |
| 6        | 31-405   | Mesh frame            | 1    |
| 7        | 84-571   | Screw                 | 4    |
| 8        | 31-305   | Pump valve            | 1    |
| 9        | 31-306   | Spring                | 1    |
| 10       | 31-307   | Screw                 | 1    |
| 11       | 31-364   | Vinyl tube coupling E | 1    |
| 12       | 31-314   | Vinyl tube coupling C | 5    |
| 13       | 31-402   | Body fixing plate     | 1    |
| 14       | 84-566   | Screw                 | 4    |
| 15       | 31-409   | Gear                  | 1    |
| 16       | 84-521   | Screw                 | 1    |
| 17       | 84-513   | Screw                 | 1    |
| 18       | 35-302   | Tube, large (75ℓ)     | 1    |
| 19       | 35-303   | Tube, large (230ℓ)    | 1    |
| 20       | 35-304   | Tube, large (410ℓ)    | 1    |
| 21       | 35-303   | Tube, large (230ℓ)    | 1    |
| 22       | 35-303   | Tube, large (230ℓ)    | 1    |
| 23       | 35-322   | Tube, small (600ℓ)    | 1    |
| 34-A     | 30-001   | Oil pump ass'y A      |      |
| 34-B     | 30-002   | Oil pump ass'y B      |      |

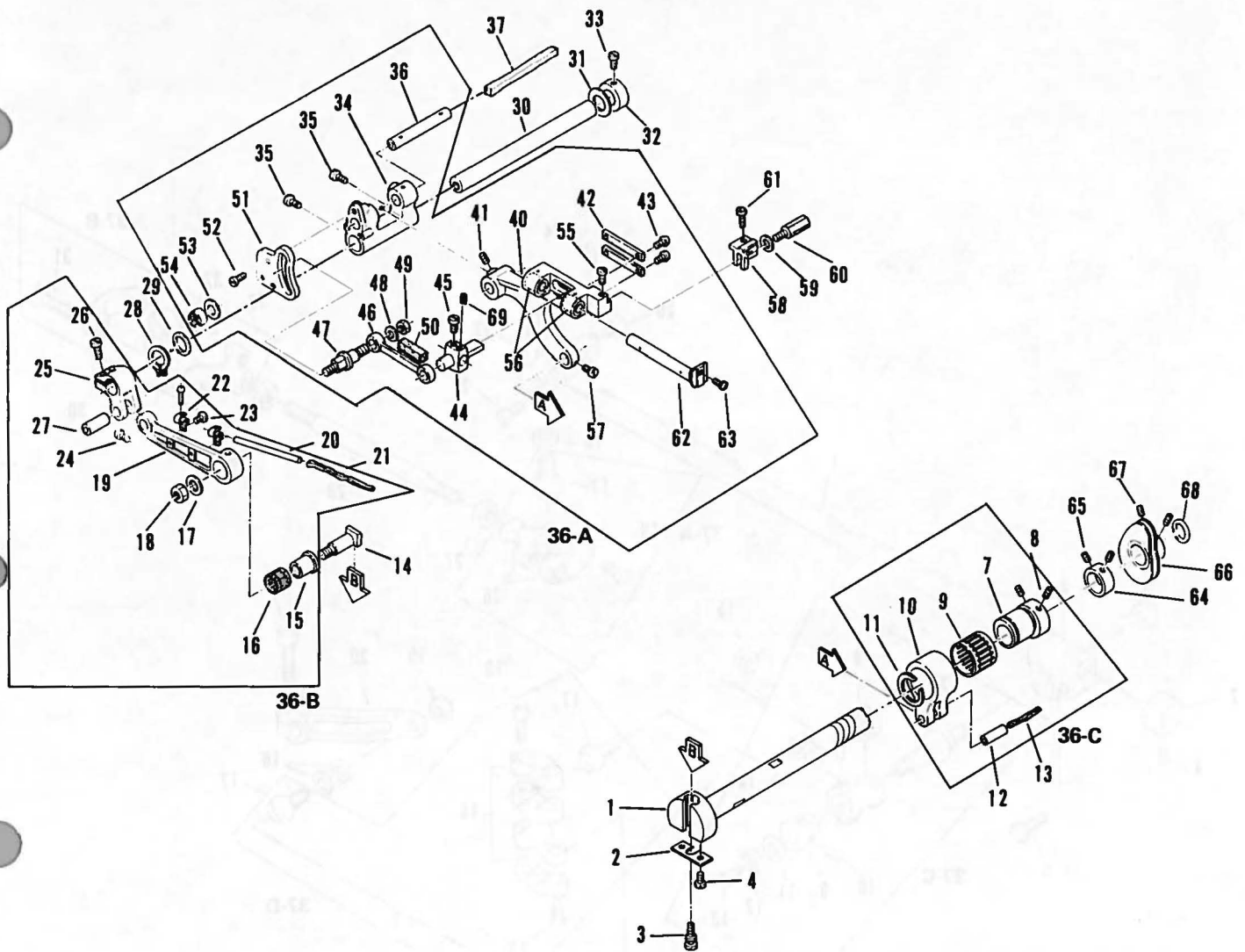
| Ref. No. | Part No. | Part Name             | Q'ty |
|----------|----------|-----------------------|------|
| 24       | 79-236   | Spring                | 1    |
| 25       | 84-615   | Screw                 | 3    |
| 26       | 75-467   | Washer                | 3    |
| 27       | 85-531   | Fixing screw          | 1    |
| 28       | 31-341   | Tube clamp            | 2    |
| 29       | 31-341   | Screw                 | 2    |
| 30       | 35-121   | Tubing                | 1    |
| 31       | 23-291   | Gasket                | 3    |
| 32       | 75-468   | Washer                | 3    |
| 33       | 84-363   | Screw                 | 3    |
| 34       | 35-246   | Set tubing            | 1    |
| 35       | 39-137   | Support               | 1    |
| 36       | 84-161   | Screw                 | 1    |
| 37       | 39-233   | Siphone case set      | 1    |
| 38       | 39-233   | O-ring set            | 1    |
| 39       | 39-133   | Tube support          | 1    |
| 40       | 84-361   | Screw                 | 1    |
| 41       | 35-257   | Tube                  | 1    |
| 42       | 23-368   | Felt                  | 1    |
| 43       | 31-310   | Dust mesh             | 1    |
| 44       | 39-102   | Mesh frame            | 1    |
| 45       | 84-361   | Screw                 | 3    |
| 46       | 39-162   | Mesh filter           | 1    |
| 47       | 31-314   | Vinyl tube coupling C | 1    |

# 5. Needle lever crank (リ・クランク機構)



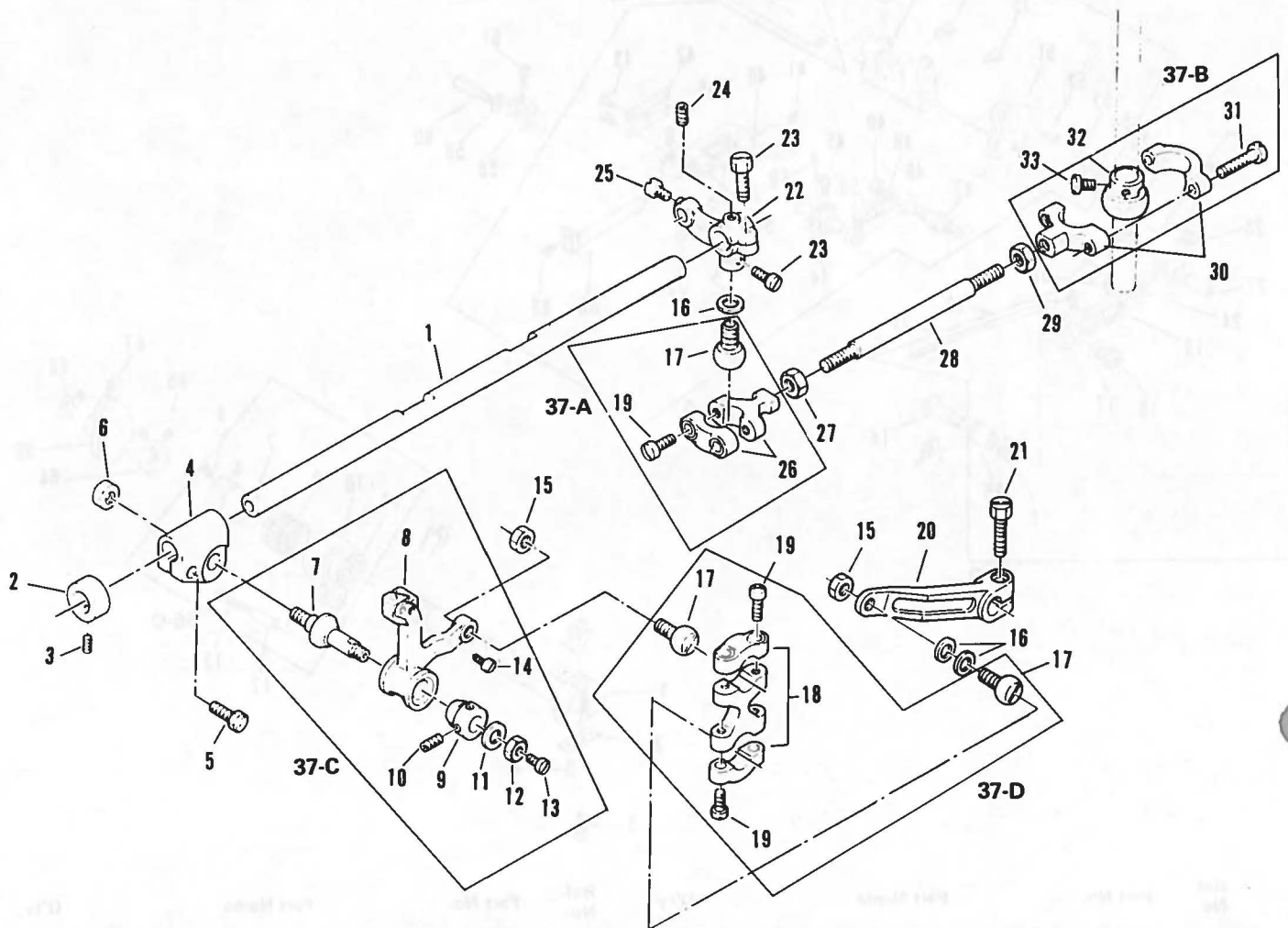
| Ref. No. | Part No. | Part Name                                   | Q'ty | Ref. No. | Part No. | Part Name                                | Q'ty |
|----------|----------|---|------|----------|----------|--|------|
| 1        | 73-111   | Needle bar holder . . . . .                 | 1    | 31       | 23-197   | O-ring . . . . .                         | 1    |
| 2        | 84-575   | Screw . . . . .                             | 2    | 32       | 69-302   | Flange B. . . . .                        | 1    |
| 3        | 84-365   | Screw . . . . .                             | 2    | 33       | 84-566   | Screw . . . . .                          | 1    |
| 4        | 71-432   | Needle bar connection link pin . . . . .    | 2    | 34       | 91-231   | Bearing . . . . .                        | 1    |
| 5        | 23-341   | Felt . . . . .                              | 2    | 35       | 75-112   | Crank shaft collar . . . . .             | 1    |
| 6        | 66-111   | Needle bar connection link . . . . .        | 1    | 36       | 84-563   | Screw . . . . .                          | 2    |
| 7        | 69-105   | Needle lever T. . . . .                     | 1    | 37       | 03-115   | Worm wheel . . . . .                     | 1    |
| 8        | 84-366   | Screw . . . . .                             | 1    | 38       | 84-712   | Screw . . . . .                          | 2    |
| 9        | 81-113   | Needle lever bushing . . . . .              | 1    | 39       | 31-410   | Worm gear . . . . .                      | 1    |
| 10       | 71-933   | Needle lever stud . . . . .                 | 1    | 40       | 84-718   | Screw . . . . .                          | 2    |
| 11       | 75-332   | Washer . . . . .                            | 1    | 41       | 61-311   | Looper avoid eccentric. . . . .          | 1    |
| 12       | 23-195   | O-ring . . . . .                            | 1    | 42       | 84-715   | Screw . . . . .                          | 2    |
| 13       | 81-412   | Needle lever stud bushing . . . . .         | 1    | 43       | 63-311   | Eccentric link . . . . .                 | 1    |
| 14       | 39-107   | Oil seal washer . . . . .                   | 1    | 44       | 71-432   | Eccentric link pin. . . . .              | 1    |
| 15       | 23-260   | Gasket . . . . .                            | 1    | 45       | 23-341   | Felt . . . . .                           | 1    |
| 16       | 85-182   | Screw . . . . .                             | 1    | 46       | 61-511   | Looper driving eccentric A . . . . .     | 1    |
| 17       | 85-114   | Screw . . . . .                             | 2    | 47       | 85-113   | Screw . . . . .                          | 5    |
| 18       | 85-212   | Screw . . . . .                             | 2    | 48       | 63-511   | Looper driving ball joint. . . . .       | 1    |
| 19       | 61-722   | Needle lever connecting rod . . . . .       | 1    | 49       | 84-568   | Screw . . . . .                          | 2    |
| 20       | 63-721   | Ball-joint for connecting rod . . . . .     | 1    | 50       | 84-572   | Screw . . . . .                          | 2    |
| 21       | 84-586   | Screw . . . . .                             | 2    | 51       | 69-121   | Guide fork. . . . .                      | 1    |
| 22       | 65-311   | Connecting bar . . . . .                    | 2    | 52       | 84-591   | Screw . . . . .                          | 1    |
| 23       | 63-331   | Ball-joint for crank shaft, large . . . . . | 1    | 53       | 61-712   | Looper driving connecting rod A. . . . . | 1    |
| 24       | 91-011   | Needle roller for crank shaft. . . . .      | 28   | 54       | 69-131   | Looper driving lever bracket . . . . .   | 1    |
| 25       | 71-835   | Crank shaft 3MB . . . . .                   | 1    | 55       | 84-812   | Screw . . . . .                          | 1    |
| 25       | 71-835   | Crank shaft 3MB . . . . .                   | 1    | 56       | 71-451   | Fixing pin . . . . .                     | 1    |
| 26       | 69-208   | Pulley. . . . .                             | 1    | 57       | 86-411   | Nut. . . . .                             | 1    |
| 27       |          |   |      | 58       | 84-716   | Screw . . . . .                          | 1    |
| 28       |          |   |      | 59       | 71-611   | Looper driving shaft . . . . .           | 1    |
| 29       |          |   |      |          |          |  |      |
| 30       | 84-763   | Screw . . . . .                             | 2    |          |          |  |      |
| 35-A     | 60-340   | Needle lever connecting rod ass'y           |      |          |          |  |      |
| 35-B     | 60-335   | Looper driving ball joint ass'y             |      |          |          |  |      |
| 35-C     | 60-075   | Looper avoid eccentric ass'y                |      |          |          |  |      |
| 35-D     | 70-033   | Crank shaft ass'y                           |      |          |          |  |      |
| 35-E     | 60-931   | Needle lever ass'y                          |      |          |          |  |      |

# 6. Feed rocker (送り台機構)



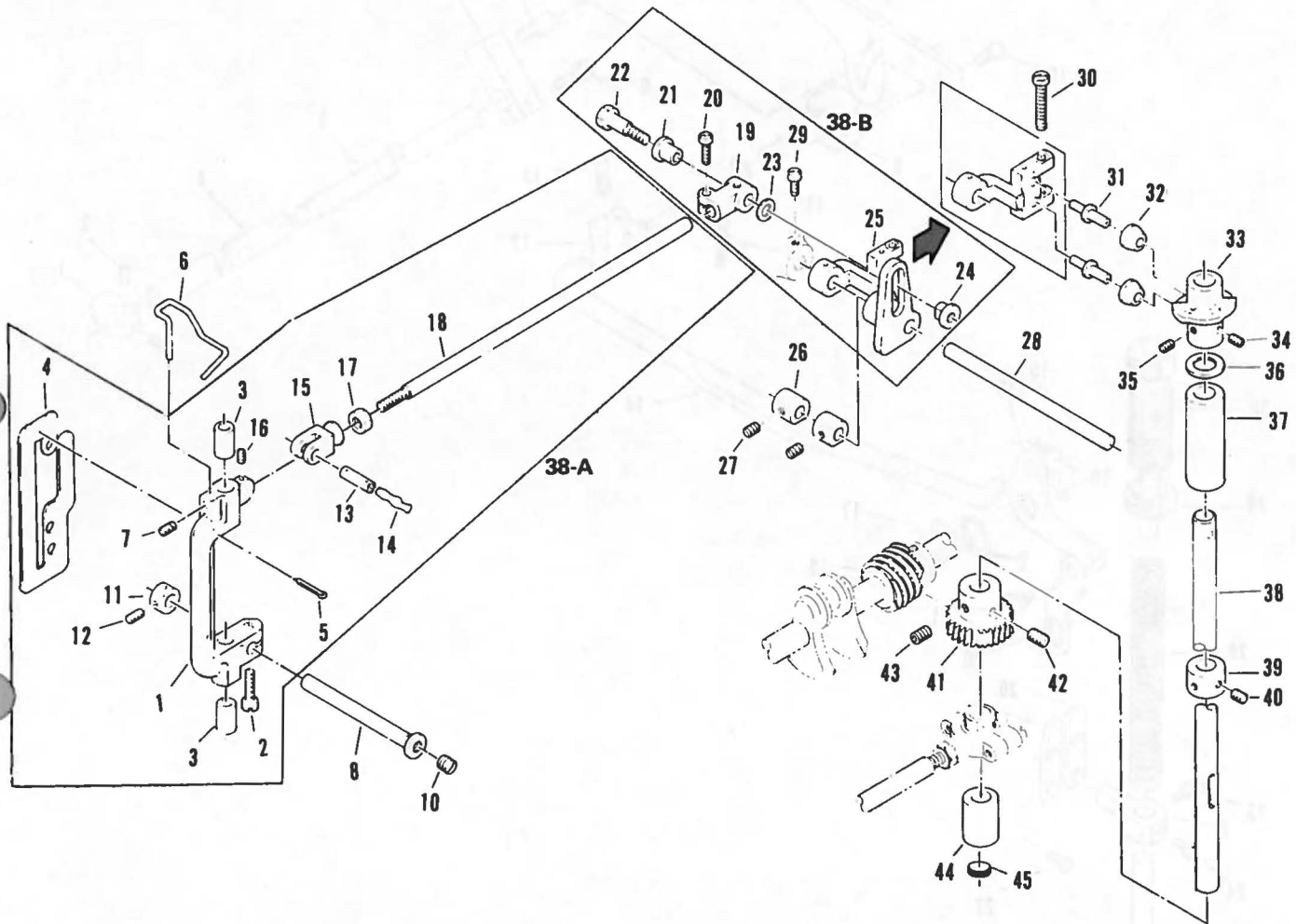
| Ref. No. | Part No. | Part Name                            | Q'ty | Ref. No. | Part No. | Part Name                                   | Q'ty |
|----------|----------|--------------------------------------|------|----------|----------|---|------|
| 1        | 71-731   | Main shaft 3A . . . . .              | 1    | 35       | 84-571   | Screw . . . . .                             | 2    |
| 2        | 51-021   | Stitch regulating stud cup . . . . . | 1    | 36       | 71-531   | Shaft . . . . .                             | 1    |
| 3        | 84-371   | Regulating screw . . . . .           | 1    | 37       | 23-391   | Felt . . . . .                              | 1    |
| 4        | 84-164   | Screw . . . . .                      | 2    | 38       |          |   |      |
| 5        |          |                                      |      | 39       |          |   |      |
| 6        |          |                                      |      | 40       | 51-103   | Main differential feed bracket. . . . .     | 1    |
| 7        | 61-322   | Feed eccentric (0.9) . . . . .       | 1    | 41       | 84-512   | Screw . . . . .                             | 1    |
| 8        | 84-712   | Screw . . . . .                      | 2    | 42       | 51-111   | Differential feed guide plate. . . . .      | 2    |
| 9        | 91-406   | Bearing . . . . .                    | 1    | 43       | 84-162   | Screw . . . . .                             | 4    |
| 10       | 63-232   | Feed eccentric link . . . . .        | 1    | 44       | 51-109   | Differential feed guide . . . . .           | 1    |
| 11       | 93-406   | Snap ring . . . . .                  | 1    | 45       | 84-379   | Screw . . . . .                             | 1    |
| 12       | 71-431   | Felt . . . . .                       | 1    | 46       | 66-506   | Feed crank link . . . . .                   | 1    |
| 13       | 23-341   | Felt . . . . .                       | 1    | 47       | 51-113   | Crank pin . . . . .                         | 1    |
| 14       | 51-011   | Feed crank adjusting stud . . . . .  | 1    | 48       | 75-389   | Washer . . . . .                            | 1    |
| 15       | 75-241   | Feed crank link roller. . . . .      | 1    | 49       | 86-311   | Nut . . . . .                               | 1    |
| 16       | 91-271   | Bearing . . . . .                    | 1    | 50       | 23-382   | Felt . . . . .                              | 1    |
| 17       | 75-453   | Washer . . . . .                     | 1    | 51       | 51-105   | Feed rocker segment slot plate . . . . .    | 1    |
| 18       | 86-412   | Nut . . . . .                        | 1    | 52       | 84-363   | Screw . . . . .                             | 3    |
| 19       | 67-312   | Feed rocker arm . . . . .            | 1    | 53       | 75-458   | Washer . . . . .                            | 1    |
| 20       | 35-276   | Tubing . . . . .                     | 1    | 54       | 86-411   | Nut . . . . .                               | 1    |
| 21       | 23-341   | Felt . . . . .                       | 1    | 55       | 84-464   | Screw . . . . .                             | 1    |
| 22       | 31-346   | Support . . . . .                    | 2    | 56       | 81-141   | Bushing . . . . .                           | 2    |
| 23       | 84-162   | Screw . . . . .                      | 2    | 57       | 84-366   | Screw . . . . .                             | 1    |
| 24       | 84-366   | Screw . . . . .                      | 1    | 58       | 51-117   | Rear feed dog holder A (F-type) . . . . .   | 1    |
| 25       | 63-352   | Feed rocker link. . . . .            | 1    | 59       | 75-455   | Washer . . . . .                            | 1    |
| 26       | 84-814   | Screw . . . . .                      | 1    | 60       | 84-591   | Screw . . . . .                             | 1    |
| 27       | 71-431   | Feed rocker link pin . . . . .       | 1    | 61       | 84-162   | Screw . . . . .                             | 2    |
| 28       | 75-371   | Washer . . . . .                     | 1    | 62       | 51-120   | Front feed dog holder . . . . .             | 1    |
| 29       | 93-261   | Snap ring . . . . .                  | 1    | 63       | 84-363   | Screw . . . . .                             | 1    |
| 30       | 71-647   | Feed rocker arm shaft . . . . .      | 1    | 64       | 75-114   | Collar . . . . .                            | 1    |
| 31       | 75-371   | Washer . . . . .                     | 1    | 65       | 84-511   | Screw . . . . .                             | 2    |
| 32       | 75-132   | Collar. . . . .                      | 1    | 66       | 49-131   | Looper thread take-up double disc . . . . . | 1    |
| 33       | 84-761   | Screw . . . . .                      | 2    | 67       | 84-711   | Screw . . . . .                             | 2    |
| 34       | 51-102   | Differential feed rocker A . . . . . | 1    | 68       | 23-197   | O-ring . . . . .                            | 1    |
| 36-A     | 50-131   | Differential feed rocker ass'y       | 1    | 69       | 84-312   | Screw . . . . .                             | 1    |
| 36-B     | 60-730   | Feed rocker arm ass'y                |      |          |          |   |      |
| 36-C     | 60-090   | Feed eccentric link ass'y            |      |          |          |   |      |

# 7. Looper (ルーパー台機構)



| Ref. No. | Part No. | Part Name                          | Q'ty | Ref. No. | Part No. | Part Name                          | Q'ty |
|----------|----------|------------------------------------|------|----------|----------|------------------------------------|------|
| 1        | 71-623   | Looper rocker shaft                | 1    | 18       | 63-801   | Looper connecting ball joint       | 1    |
| 2        | 75-133   | Collar                             | 1    | 19       | 84-572   | Screw                              | 6    |
| 3        | 84-575   | Screw                              | 1    | 20       | 67-231   | Looper connecting lever            | 1    |
| 4        | 19-301   | Looper rocker base                 | 1    | 21       | 85-211   | Screw                              | 1    |
| 5        | 84-812   | Screw                              | 1    | 22       | 67-131   | Looper side step arm               | 1    |
| 6        | 86-502   | Nut                                | 1    | 23       | 84-814   | Screw                              | 2    |
| 7        | 71-901   | Looper rocker tapered pin          | 1    | 24       | 84-563   | Screw                              | 1    |
| 8        | 19-311   | Looper rocker                      | 1    | 25       | 84-366   | Screw                              | 1    |
| 9        | 81-401   | Tapered pin bushing                | 1    | 26       | 63-812   | Looper connecting ball joint, left | 1    |
| 10       | 84-521   | Screw                              | 2    | 27       | 86-412   | Nut                                | 1    |
| 11       | 75-452   | Washer                             | 1    | 28       | 65-332   | Looper side step connection        | 1    |
| 12       | 86-501   | Nut                                | 1    | 29       | 86-411   | Nut                                | 1    |
| 13       | 84-361   | Screw                              | 1    | 30       | 63-611   | Looper side step ball joint        | 1    |
| 14       | 84-616   | Screw                              | 2    | 31       | 84-568   | Screw                              | 2    |
| 15       | 86-411   | Nut                                | 2    | 32       | 61-611   | Looper side step eccentric         | 1    |
| 16       | 75-391   | Washer                             | 2    | 33       | 84-575   | Screw                              | 2    |
| 17       | 61-823   | Looper driving connecting rod      | 3    |          |          |                                    |      |
| 37-A     | 60-382   | Connecting ball joint ass'y        |      |          |          |                                    |      |
| 37-B     | 60-331   | Looper side step ball joint ass'y  |      |          |          |                                    |      |
| 37-C     | 10-911   | Looper holder ass'y                |      |          |          |                                    |      |
| 37-D     | 60-330   | Looper connecting ball joint ass'y |      |          |          |                                    |      |

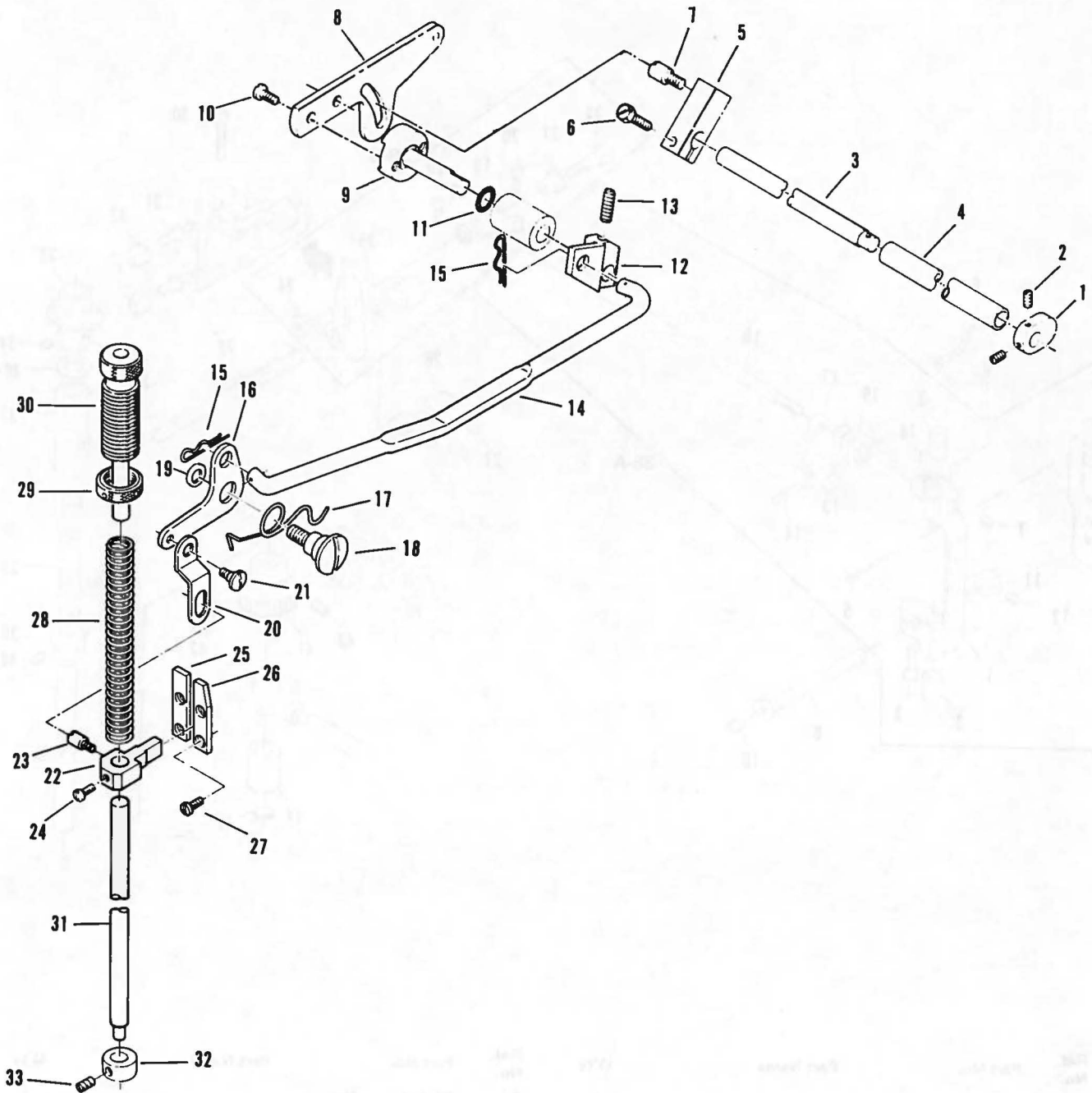
# 8. Needle reciprocating mechanism (針振り機構)



| Ref. No. | Part No. | Part Name                         | Q'ty |
|----------|----------|-----------------------------------|------|
| 1        | 03-101   | Needle bar frame                  | 1    |
| 2        | 84-591   | Screw                             | 1    |
| 3        | 81-171   | Bushing                           | 2    |
| 4        | 23-331   | Felt                              | 1    |
| 5        | 93-621   | Pin for felt                      | 2    |
| 6        | 45-221   | Needle thread take-up wire        | 1    |
| 7        | 84-521   | Screw                             | 1    |
| 8        | 71-511   | Needle bar frame shaft            | 1    |
| 10       | 85-132   | Screw                             | 1    |
| 11       | 75-152   | Collar                            | 1    |
| 12       | 84-511   | Screw                             | 2    |
| 13       | 71-431   | Needle bar connecting link pin    | 1    |
| 14       | 23-341   | Felt                              | 1    |
| 15       | 66-131   | Connecting link                   | 1    |
| 16       | 84-312   | Screw                             | 1    |
| 17       | 86-701   | Nut                               | 1    |
| 18       | 65-331   | Needle bar connecting             | 1    |
| 19       | 03-103   | Needle bar connecting link        | 1    |
| 20       | 84-572   | Screw                             | 1    |
| 21       | 75-251   | Link roller                       | 1    |
| 22       | 84-831   | Screw                             | 1    |
| 23       | 75-453   | Washer                            | 1    |
| 38-A     | 00-301   | Connecting link ass'y             |      |
| 38-B     | 00-305   | Driving cam, cam roller arm ass'y |      |

| Ref. No. | Part No. | Part Name                   | Q'ty |
|----------|----------|-----------------------------|------|
| 24       | 86-481   | Nut                         | 1    |
| 25       | 03-105   | Driving cam, cam roller arm | 1    |
| 26       | 75-151   | Collar                      | 2    |
| 27       | 85-111   | Screw                       | 2    |
| 28       | 71-521   | Shaft                       | 1    |
| 29       | 84-572   | Screw                       | 1    |
| 30       | 84-589   | Screw                       | 1    |
| 31       | 03-107   | Roller fixing stud          | 2    |
| 32       | 03-109   | Roller                      | 2    |
| 33       | 03-111   | Cam                         | 1    |
| 34       | 84-715   | Screw                       | 1    |
| 35       | 84-716   | Screw                       | 1    |
| 36       | 75-372   | Washer                      | 1    |
| 37       | 81-121   | Bushing, upper              | 1    |
| 38       | 71-631   | Cam drive shaft             | 1    |
| 39       | 75-131   | Collar                      | 1    |
| 40       | 85-112   | Screw                       | 2    |
| 41       | 03-113   | Worm gear                   | 1    |
| 42       | 84-712   | Screw                       | 1    |
| 43       | 84-716   | Screw                       | 1    |
| 44       | 81-122   | Bushing, lower              | 1    |
| 45       | 85-341   | Screw                       | 1    |

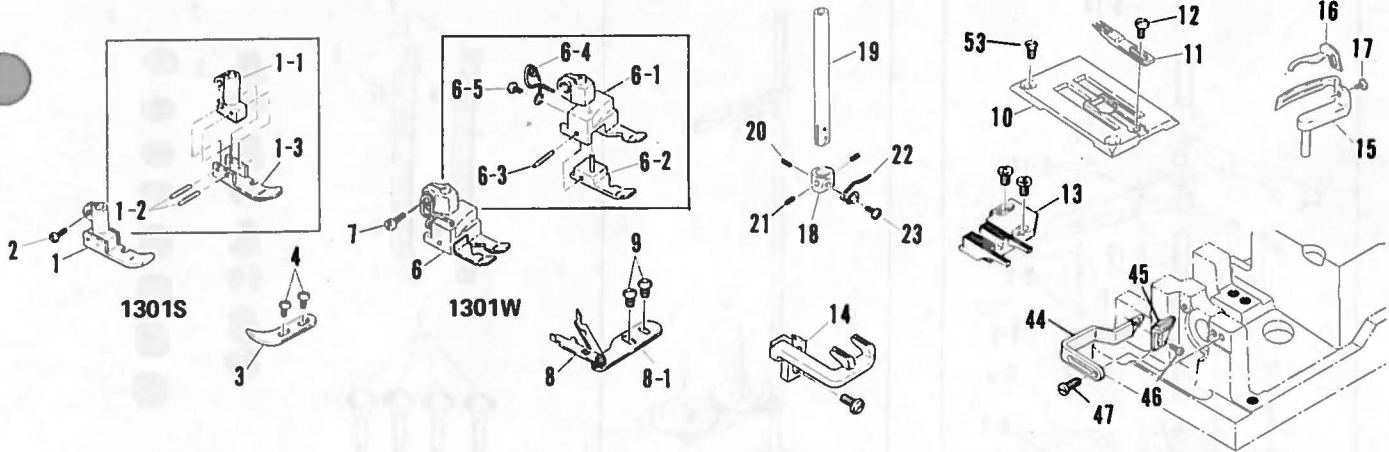
# 9. Foot lifter mechanism (押え上げ機構)



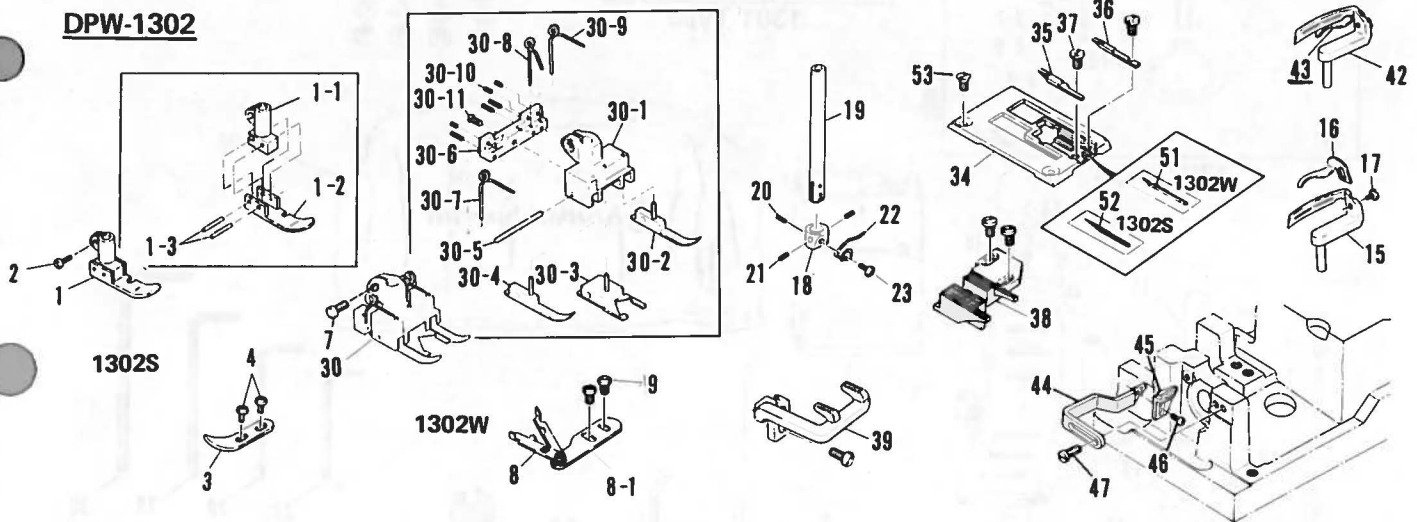
| Ref. No. | Part No. | Part Name                                      | Q'ty | Ref. No. | Part No. | Part Name                                     | Q'ty |
|----------|----------|--|------|----------|----------|---|------|
| 1        | 77-101   | Lifter lever connection . . . . .              | 1    | 18       | 84-781   | Screw . . . . .                               | 1    |
| 2        | 84-512   | Screw . . . . .                                | 2    | 19       | 75-453   | Washer . . . . .                              | 1    |
| 3        | 77-112   | Foot lifter crank shaft . . . . .              | 1    | 20       | 77-131   | Lifter lever link . . . . .                   | 1    |
| 4        | 77-122   | Crank shaft pipe . . . . .                     | 1    | 21       | 84-581   | Screw . . . . .                               | 1    |
| 5        | 77-103   | Adjusting post supporter . . . . .             | 1    | 22       | 77-133   | Presser bar guide . . . . .                   | 1    |
| 6        | 84-812   | Screw . . . . .                                | 1    | 23       | 84-561   | Screw . . . . .                               | 1    |
| 7        | 84-561   | Screw . . . . .                                | 1    | 24       | 84-563   | Screw . . . . .                               | 1    |
| 8        | 77-105   | Presser foot lifter lever . . . . .            | 1    | 25       | 77-135   | Presser bar connecting guide, left . . . . .  | 1    |
| 9        | 77-114   | Presser foot lifter lever post . . . . .       | 1    | 26       | 77-136   | Presser bar connecting guide, right . . . . . | 1    |
| 10       | 84-566   | Screw . . . . .                                | 2    | 27       | 84-362   | Screw . . . . .                               | 4    |
| 11       | 23-189   | O-ring . . . . .                               | 1    | 28       | 79-121   | Presser bar spring . . . . .                  | 1    |
| 12       | 77-108   | Presser foot lifter connecting plate . . . . . | 1    | 29       | 86-851   | Nut . . . . .                                 | 1    |
| 13       | 84-713   | Screw . . . . .                                | 1    | 30       | 85-761   | Presser bar screw . . . . .                   | 1    |
| 14       | 77-117   | Lifter lever connecting bar . . . . .          | 1    | 31       | 71-542   | Presser bar (small) . . . . .                 | 1    |
| 15       | 93-611   | Snap pin A. . . . .                            | 2    | 32       | 75-154   | Collar . . . . .                              | 1    |
| 16       | 77-109   | Lifter lever spring supporter . . . . .        | 1    | 33       | 84-511   | Screw . . . . .                               | 1    |
| 17       | 79-222   | Lifter lever spring . . . . .                  | 1    |          |          |   |      |

# 10. Gauge parts (ゲージ関係)

## DPW-1301



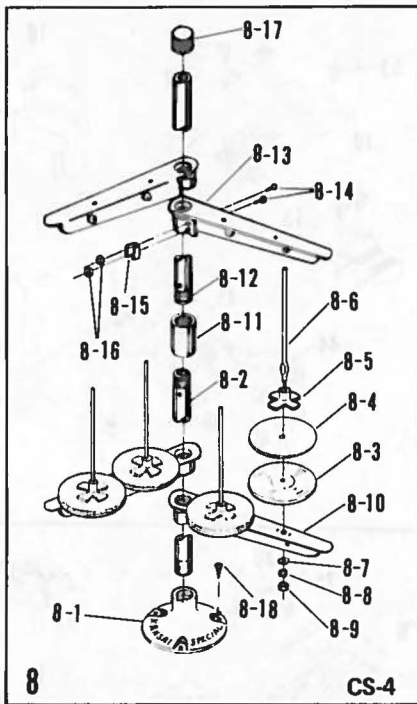
## DPW-1302



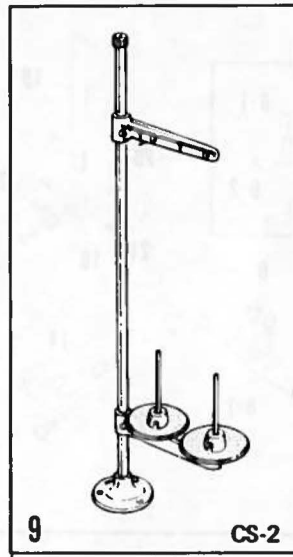
| Ref. No. | Part No. | Part Name                | Q'ty   |
|----------|----------|--------------------------|--------|
| 1        | 17-301   | Presser foot (1301S)     | .1 set |
| 1-1      | 17-301-1 | Presser foot shank       | 1      |
| 1-2      | 17-301-3 | Pin                      | 2      |
| 1-3      | 17-301-2 | Yielding section         | 1      |
| 2        | 84-382   | Screw                    | 1      |
| 3        | 18-301   | Ruler S                  | 1      |
| 4        | 85-181   | Screw                    | 2      |
| 5        |          |                          |        |
| 6        | 17-302   | Presser foot (1301W)     | .1 set |
| 6-1      | 17-302-1 | Presser foot, bottom     | 1      |
| 6-2      | 17-302-2 | Feed section guide, left | 1      |
| 6-3      |          | Feed pin                 | 1      |
| 6-4      | 17-302-3 | Spring                   | 1      |
| 6-5      | 84-161   | Screw                    | 1      |
| 7        | 84-382   | Screw                    | 1      |
| 8        | 18-362   | Ruler W                  | 1      |
| 8-1      | 18-362-4 | Screw                    | 1      |
| 9        | 85-181   | Screw                    | 2      |
| 10       | 14-302   | Needle plate (1301)      | 1      |
| 11       | 14-336   | Nail 1301                | 1      |
| 12       | 84-163   | Screw                    | 1      |
| 13       | 15-362   | Rear feed dog (1301)     | 1      |
| 14       | 15-302   | Front feed dog (1301)    | 1      |
| 15       | 19-353   | Front looper (1301)      | 1      |
| 16       | 79-572   | Thread retaining spring  | 1      |
| 17       | 85-611   | Screw                    | 1      |
| 18       | 12-702   | Needle clamp             | 1      |
| 19       | 11-301   | Needle bar               | 1      |
| 20       | 84-513   | Screw                    | 1      |
| 21       | 84-511   | Screw                    | 2      |
| 22       | 45-232   | Needle clamp guide       | 1      |
| 23       | 84-191   | Screw                    | 1      |
| 24       |          |                          |        |
| 25       |          |                          |        |
| 26       |          |                          |        |
| 27       |          |                          |        |

| Ref. No. | Part No.  | Part Name                 | Q'ty   |
|----------|-----------|---------------------------|--------|
| 28       |           |                           |        |
| 29       |           |                           |        |
| 30       | 17-361    | Presser foot 1302W        | .1 set |
| 30-1     | 17-361-1  | Presser foot shank        | 1      |
| 30-2     | 17-361-3  | Feed section guide, right | 1      |
| 30-3     | 17-361-2  | Presser foot, bottom      | 1      |
| 30-4     | 17-361-4  | Feed section guide, left  | 1      |
| 30-5     | 17-361-9  | Pin                       | 1      |
| 30-6     | 17-361-5  | Mounting bracket          | 1      |
| 30-7     | 17-361-6  | Spring                    | 1      |
| 30-8     | 17-361-8  | Spring                    | 1      |
| 30-9     | 17-361-7  | Spring                    | 1      |
| 30-10    | 17-361-11 | Screw                     | 6      |
| 30-11    | 84-162    | Screw                     | 1      |
| 31       |           |                           |        |
| 32       |           |                           |        |
| 33       |           |                           |        |
| 34       | 14-301    | Needle plate (1302)       | 1      |
| 35       | 14-333    | Left nail                 | 1      |
| 36       | 14-331    | Right nail                | 1      |
| 37       | 84-191    | Screw                     | 2      |
| 38       | 15-361    | Rear feed dog             | 1      |
| 39       | 15-301    | Front feed dog            | 1      |
| 40       |           |                           |        |
| 41       |           |                           |        |
| 42       | 19-351    | Rear looper               | 2      |
| 43       | 79-571    | Thread retaining spring   | 1      |
| 44       | 18-322    | Needle guard bracket      | 1      |
| 45       | 18-321    | Needle guard              | 1      |
| 46       | 84-374    | Screw                     | 1      |
| 47       | 84-571    | Screw                     | 2      |
| 48       |           |                           |        |
| 49       |           |                           |        |
| 50       |           |                           |        |
| 51       | 14-332    | Center nail (1302W)       | 1      |
| 52       | 14-337    | Center nail (1302S)       | 1      |
| 53       | 84-464    | Screw                     | 2      |

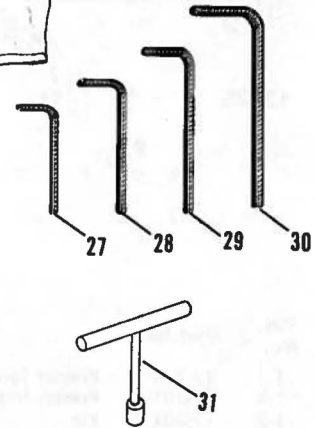
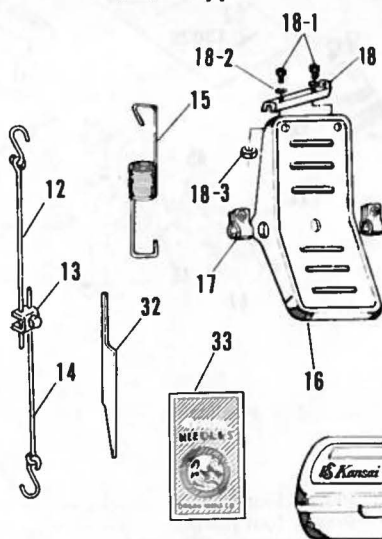
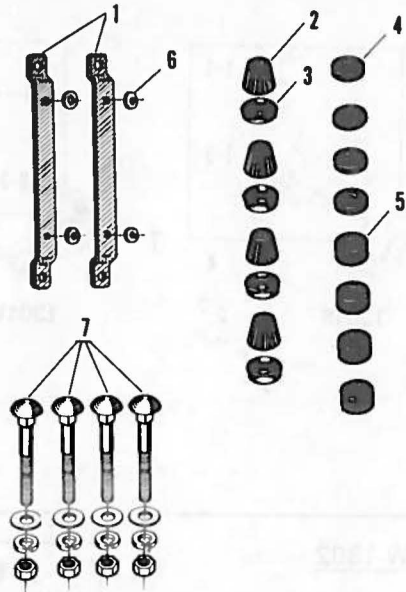
# 11. Thread stands, Accessories (糸立て・アクセサリー)



1302 Type



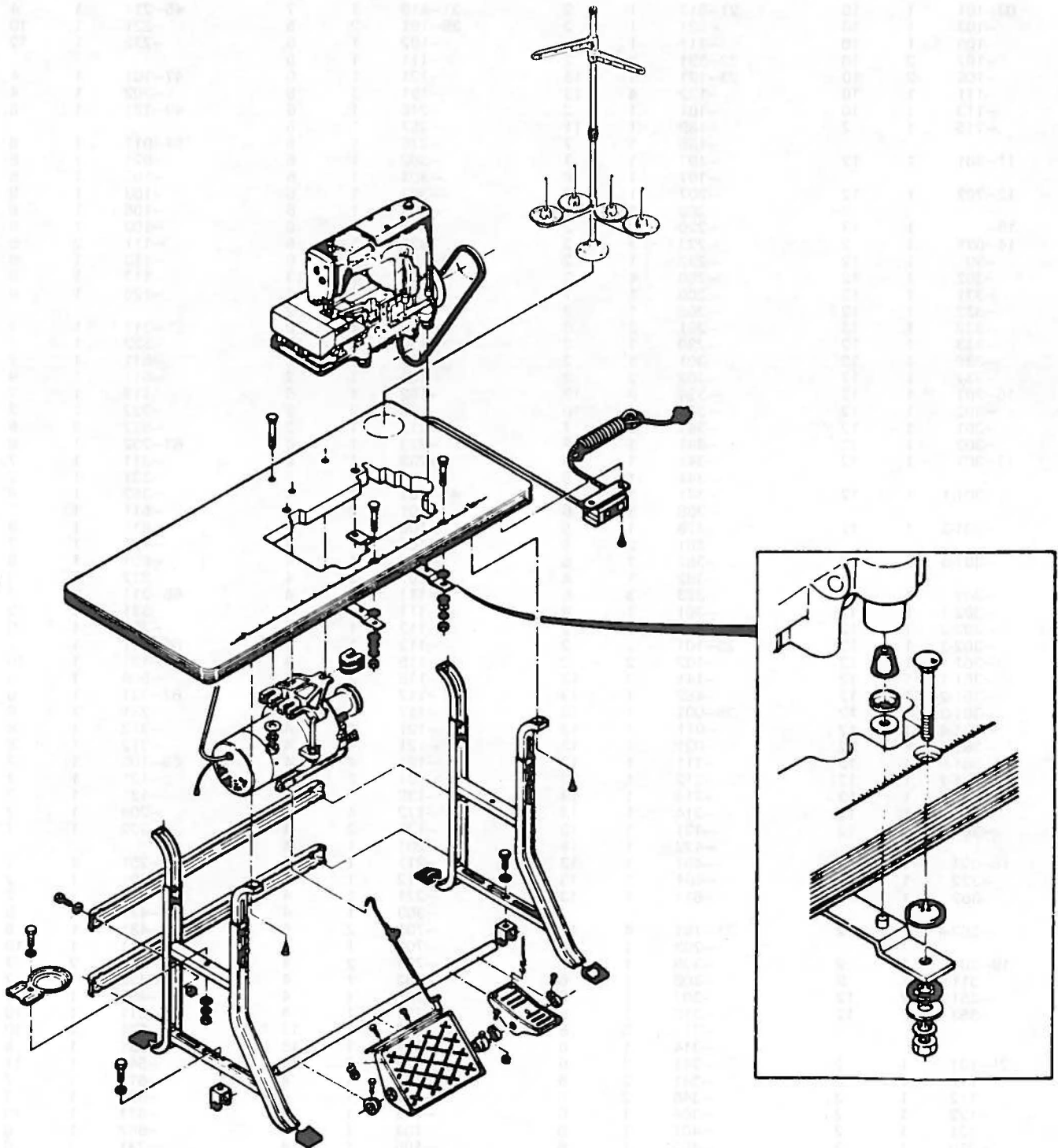
1301 Type



| Ref. No. | Part No. | Part Name                | Q'ty   | Ref. No. | Part No. | Part Name                      | Q'ty  |
|----------|----------|--------------------------|--------|----------|----------|--------------------------------|-------|
| 1        | 25-141   | Machine mounting bracket | 2      | 9        | 42-002   | Thread stand (CS-2)            | 1     |
| 2        | 31-161   | Cam cushion              | 4      | 12       | 77-007   | Tie-rod (upper)                | 1 set |
| 3        | 39-104   | Disc                     | 4      | 13       | 77-006   | Joint (with screw)             | 1 set |
| 4        | 23-121   | Rubber A                 | 4      | 14       | 77-005   | Tie-rod (lower)                | 1 set |
| 5        | 23-122   | Rubber B                 | 4      | 15       | 77-003   | Spring for pedal               | 1     |
| 6        | 23-324   | Felt                     | 4      | 16       | 77-001   | Pedal for foot lifter          | 1     |
| 7        | 80-751   | Bolt                     | 4 sets | 17       | 77-002   | Collar                         | 2     |
| 8        | 42-004   | Thread stand (CS-4)      | 1 set  | 18       | 77-004   | Lever                          | 1     |
| 8-1      |          | Base                     | 1      | 18-1     |          | Screw                          | 2     |
| 8-2      |          | Bar (low)                | 1      | 18-2     |          | Washer                         | 2     |
| 8-3      |          | Spool tray               | 4      | 18-3     |          | Nut                            | 2     |
| 8-4      |          | Thread cushion           | 4      | 19       | 28-001   | Accessory box                  | 1     |
| 8-5      |          | Spool retaining fin      | 4      | 20       | 28-021   | Machine cover                  | 1     |
| 8-6      |          | Spool pin                | 4      | 21       | 28-611   | Oil (Esso Tellezzo 33)         | 1     |
| 8-7      |          | Washer                   | 4      | 22       | 28-451   | Small driver                   | 1     |
| 8-8      |          | Nut spring washer        | 4      | 23       | 25-452   | Driver                         | 1     |
| 8-9      |          | Nut                      | 4      | 24       | 28-011   | Tweezer                        | 1     |
| 8-10     |          | Spool pin bracket        | 1      | 25       | 28-421   | Spanner                        | 1     |
| 8-11     |          | Collar                   | 1      | 26       | 28-422   | Spanner                        | 1     |
| 8-12     |          | Bar (upper)              | 1      | 27       | 28-311   | Wrench                         | 1     |
| 8-13     |          | Thread guide bracket     | 1      | 28       | 28-312   | Wrench                         | 1     |
| 8-14     |          | Screw                    | 4      | 29       | 28-313   | Wrench                         | 1     |
| 8-15     |          | Angle washer             | 2      | 30       | 28-314   | Wrench                         | 1     |
| 8-16     |          | Nut                      | 4      | 31       | 28-464   | Wrench T-type (9.5m/m)         | 1     |
| 8-17     |          | Cup                      | 1      | 32       | 14-332   | Center nail                    | 1     |
| 8-18     | 42-122   | Screw                    | 3      | 33       | 13-      | Needle (UOx163, UY163, SY7185) | 1     |



## 12. Table stand installation diagram (テーブルスタンド据付図)



# 13. Index (索引)

| Part No. | Q'ty | Page No. | Part No. | Q'ty | Page No. | Part No. | Q'ty | Page No. | Part No. | Q'ty | Page No. |
|----------|------|----------|----------|------|----------|----------|------|----------|----------|------|----------|
| 03-101   | 1    | 10       | 21-513   | 1    | 2        | 31-410   | 1    | 7        | 45-211   | 1    | 4        |
| -103     | 1    | 10       | -521     | 1    | 2        | 35-101   | 2    | 5        | -221     | 1    | 10       |
| -105     | 1    | 10       | -711     | 1    | 2        | -102     | 1    | 5        | -232     | 1    | 12       |
| -107     | 2    | 10       | 22-351   | 1    | 2        | -111     | 1    | 5        | 47-101   | 1    | 4        |
| -109     | 2    | 10       | 23-121   | 4    | 13       | -121     | 1    | 6        | -202     | 1    | 4        |
| -111     | 1    | 10       | -122     | 4    | 13       | -191     | 3    | 5        | 49-131   | 1    | 8        |
| -113     | 1    | 10       | -161     | 1    | 2        | -246     | 1    | 6        | 51-011   | 1    | 8        |
| -115     | 1    | 7        | -189     | 1    | 11       | -257     | 1    | 6        | -021     | 1    | 8        |
| 11-301   | 1    | 12       | -195     | 1    | 7        | -276     | 1    | 8        | -102     | 1    | 8        |
| 12-702   | 1    | 12       | -197     | 1    | 7        | -302     | 1    | 6        | -103     | 1    | 8        |
| 13-      | 1    | 13       | -197     | 1    | 8        | -303     | 1    | 6        | -105     | 1    | 8        |
| 14-031   | 1    | 2        | -207     | 1    | 2        | -303     | 1    | 6        | -109     | 1    | 8        |
| -301     | 1    | 12       | -208     | 1    | 2        | -304     | 1    | 6        | -111     | 2    | 8        |
| -302     | 1    | 12       | -220     | 1    | 2        | -322     | 1    | 6        | -113     | 1    | 8        |
| -331     | 1    | 12       | -223     | 1    | 2        | 39-102   | 1    | 6        | -117     | 1    | 8        |
| -332     | 1    | 12       | -232     | 1    | 2        | -104     | 4    | 13       | -120     | 1    | 8        |
| -332     | 1    | 13       | -260     | 4    | 2        | -107     | 1    | 7        | 61-311   | 1    | 7        |
| -333     | 1    | 12       | -260     | 1    | 7        | -108     | 1    | 2        | -322     | 1    | 8        |
| -336     | 1    | 12       | -263     | 1    | 2        | -128     | 1    | 5        | -511     | 1    | 7        |
| -337     | 1    | 12       | -291     | 3    | 6        | -133     | 1    | 6        | -611     | 1    | 9        |
| 15-301   | 1    | 12       | -299     | 1    | 2        | -137     | 1    | 6        | -712     | 1    | 7        |
| -302     | 1    | 12       | -301     | 1    | 2        | -161     | 1    | 2        | -722     | 1    | 7        |
| -361     | 1    | 12       | -302     | 2    | 2        | -162     | 1    | 6        | -823     | 3    | 9        |
| -362     | 1    | 12       | -324     | 4    | 13       | -163     | 2    | 2        | 63-232   | 1    | 8        |
| 17-301   | 1    | 12       | -331     | 1    | 10       | -213     | 1    | 2        | -311     | 1    | 7        |
| -301-1   | 1    | 12       | -341     | 1    | 7        | -233     | 1    | 6        | -331     | 1    | 7        |
| -301-2   | 1    | 12       | -341     | 1    | 8        | 41-101   | 4    | 4        | -352     | 1    | 8        |
| -301-3   | 1    | 12       | -341     | 1    | 8        | -101     | 2    | 4        | -511     | 1    | 7        |
| -302     | 1    | 12       | -341     | 1    | 10       | -105     | 4    | 4        | -611     | 1    | 9        |
| -302-1   | 1    | 12       | -368     | 1    | 6        | -105     | 2    | 4        | -721     | 1    | 7        |
| -302-2   | 1    | 12       | -378     | 1    | 5        | -107     | 4    | 4        | -801     | 1    | 9        |
| -302-3   | 1    | 12       | -381     | 2    | 5        | -107     | 2    | 4        | -812     | 1    | 9        |
| -361     | 1    | 12       | -382     | 1    | 5        | -111     | 4    | 4        | 65-311   | 2    | 7        |
| -361-1   | 1    | 12       | -382     | 1    | 8        | -113     | 8    | 4        | -331     | 1    | 10       |
| -361-2   | 1    | 12       | -383     | 3    | 5        | -113     | 1    | 4        | -332     | 1    | 9        |
| -361-3   | 1    | 12       | -391     | 1    | 8        | -115     | 4    | 4        | 66-111   | 1    | 7        |
| -361-4   | 1    | 12       | -402     | 1    | 2        | -115     | 2    | 4        | -131     | 1    | 10       |
| -361-5   | 1    | 12       | 25-101   | 2    | 2        | -117     | 4    | 4        | -506     | 1    | 8        |
| -361-6   | 1    | 12       | -102     | 2    | 2        | -117     | 2    | 4        | 67-131   | 1    | 9        |
| -361-7   | 1    | 12       | -141     | 2    | 13       | -121     | 1    | 4        | -231     | 1    | 9        |
| -361-8   | 1    | 12       | -452     | 1    | 13       | -121     | 1    | 4        | -312     | 1    | 8        |
| -361-9   | 1    | 12       | 28-001   | 1    | 13       | -131     | 4    | 4        | -312     | 1    | 8        |
| -361-11  | 1    | 12       | -011     | 1    | 13       | -131     | 2    | 4        | 69-105   | 1    | 7        |
| 18-321   | 1    | 12       | -021     | 1    | 13       | -132     | 1    | 4        | -121     | 1    | 7        |
| -322     | 1    | 12       | -311     | 1    | 13       | -132     | 1    | 4        | -131     | 1    | 7        |
| -362     | 1    | 12       | -312     | 1    | 13       | -172     | 4    | 4        | -208     | 1    | 7        |
| -362-4   | 1    | 12       | -313     | 1    | 13       | -172     | 2    | 4        | -302     | 1    | 7        |
| 19-301   | 1    | 9        | -314     | 1    | 13       | -201     | 1    | 4        | 71-251   | 2    | 2        |
| -311     | 1    | 9        | -422     | 1    | 13       | -211     | 1    | 4        | -301     | 1    | 2        |
| -351     | 2    | 12       | -451     | 1    | 13       | -212     | 1    | 4        | -401     | 1    | 2        |
| -353     | 1    | 12       | -464     | 1    | 13       | -271     | 1    | 4        | -431     | 1    | 8        |
| 21-101   | 1    | 2        | -611     | 1    | 13       | -303     | 1    | 4        | -431     | 1    | 8        |
| -112     | 1    | 2        | 31-161   | 4    | 13       | -701     | 2    | 4        | -431     | 1    | 10       |
| -112     | 1    | 2        | -203     | 1    | 2        | -701     | 1    | 4        | -432     | 2    | 7        |
| -122     | 1    | 2        | -305     | 1    | 6        | -702     | 2    | 4        | -432     | 1    | 7        |
| -131     | 1    | 2        | -306     | 1    | 6        | -702     | 1    | 4        | -451     | 1    | 7        |
| -210     | 1    | 2        | -307     | 1    | 6        | -721     | 1    | 4        | -511     | 1    | 10       |
| -301     | 1    | 2        | -310     | 1    | 6        | -721     | 1    | 4        | -521     | 1    | 10       |
| -320     | 1    | 2        | -314     | 5    | 6        | 42-002   | 1    | 13       | -531     | 1    | 8        |
| -402     | 1    | 2        | -314     | 1    | 6        | -004     | 1    | 13       | -542     | 1    | 11       |
| -431     | 1    | 2        | -341     | 2    | 6        | -122     | 3    | 13       | -611     | 1    | 7        |
| -441     | 1    | 2        | -341     | 2    | 6        | -101     | 1    | 4        | -623     | 1    | 9        |
| -501     | 1    | 2        | -346     | 2    | 8        | -102     | 1    | 4        | -631     | 1    | 10       |
|          |      |          | -364     | 1    | 6        | -103     | 1    | 4        | -647     | 1    | 8        |
|          |      |          | -401     | 1    | 6        | -104     | 1    | 4        | -731     | 1    | 8        |
|          |      |          | -402     | 1    | 6        | -105     | 1    | 4        | -835     | 1    | 7        |
|          |      |          | -403     | 1    | 6        | -111     | 1    | 4        | -835     | 1    | 7        |
|          |      |          | -404     | 1    | 6        | -112     | 2    | 4        | -901     | 1    | 9        |
|          |      |          | -405     | 1    | 6        | 45-101   | 1    | 4        | -933     | 1    | 7        |
|          |      |          | -406     | 1    | 6        | -121     | 1    | 4        | 73-111   | 1    | 7        |
|          |      |          | -407     | 1    | 6        | -131     | 1    | 4        | 75-112   | 1    | 7        |
|          |      |          | -409     | 1    | 6        | -142     | 1    | 4        |          |      |          |

# 13. Index (索引)

| Part No. | Q'ty | Page No. | Part No. | Q'ty | Page No. | Part No. | Q'ty | Page No. | Part No. | Q'ty | Page No. |
|----------|------|----------|----------|------|----------|----------|------|----------|----------|------|----------|
| 75-114   | 1    | 8        | 81-401   | 1    | 9        | 84-563   | 2    | 7        | 85-341   | 2    | 5        |
| -131     | 1    | 10       | -412     | 1    | 7        | -563     | 1    | 9        | -341     | 1    | 10       |
| -132     | 1    | 8        | -711     | 1    | 5        | -563     | 1    | 11       | -501     | 13   | 5        |
| -133     | 1    | 9        | -713     | 1    | 5        | -566     | 2    | 11       | -531     | 1    | 6        |
| -151     | 2    | 10       | -736     | 3    | 5        | -566     | 4    | 2        | -531     | 2    | 4        |
| -152     | 1    | 10       | -751     | 2    | 5        | -566     | 6    | 2        | -611     | 2    | 12       |
| -154     | 1    | 11       | 84-161   | 1    | 6        | -566     | 4    | 6        | -611     | 2    | 12       |
| -241     | 1    | 8        | -161     | 2    | 4        | -566     | 1    | 7        |          |      |          |
| -251     | 1    | 10       | -161     | 1    | 4        | -568     | 2    | 7        | -627     | 2    | 2        |
| -332     | 1    | 7        | -161     | 2    | 4        | -568     | 2    | 9        | -628     | 2    | 2        |
| -371     | 1    | 8        | -161     | 1    | 12       | -571     | 8    | 2        | -761     | 1    | 11       |
| -371     | 1    | 8        | -162     | 2    | 8        | -571     | 1    | 2        | 86-211   | 1    | 4        |
| -372     | 1    | 10       | -162     | 4    | 8        | -571     | 2    | 2        | -251     | 1    | 4        |
| -381     | 1    | 2        | -162     | 2    | 8        | -571     | 2    | 4        | -311     | 1    | 8        |
| -381     | 1    | 4        | -162     | 2    | 4        | -571     | 2    | 4        | -411     | 2    | 4        |
| -389     | 1    | 8        | -162     | 1    | 12       | -571     | 4    | 6        | -411     | 1    | 4        |
| -391     | 2    | 9        | -163     | 1    | 12       | -571     | 2    | 8        | -411     | 1    | 4        |
| -446     | 2    | 2        | -164     | 2    | 5        | -571     | 2    | 12       | -411     | 1    | 7        |
| -452     | 2    | 2        | -164     | 2    | 8        | -571     | 2    | 2        | -411     | 1    | 8        |
| -452     | 1    | 9        | -171     | 1    | 4        | -572     | 2    | 7        | -411     | 2    | 9        |
| -453     | 1    | 10       | -191     | 1    | 12       | -572     | 1    | 10       | -411     | 1    | 9        |
| -453     | 1    | 11       |          |      |          | -572     | 1    | 10       | -412     | 1    | 8        |
| -453     | 1    | 2        | -191     | 2    | 12       | -572     | 6    | 9        | -412     | 1    | 9        |
| -453     | 1    | 8        | -312     | 1    | 8        | -572     | 3    | 2        | -481     | 1    | 10       |
| -455     | 1    | 8        | -312     | 1    | 10       | -574     | 3    | 2        | -501     | 1    | 9        |
| -456     | 1    | 4        | -361     | 1    | 2        | -575     | 1    | 9        | -501     | 1    | 5        |
| -458     | 1    | 8        | -361     | 2    | 2        | -575     | 2    | 9        | -502     | 1    | 9        |
| -467     | 3    | 6        | -361     | 1    | 4        | -575     | 2    | 7        | -701     | 1    | 10       |
| -468     | 3    | 6        | -361     | 1    | 4        | -581     | 1    | 11       | -851     | 1    | 11       |
| -469     | 1    | 2        | -361     | 1    | 4        | -586     | 2    | 7        | 87-311   | 1    | 5        |
| 77-001   | 1    | 13       | -361     | 1    | 4        | -589     | 1    | 10       | -756     | 2    | 2        |
| -002     | 2    | 13       | -361     | 1    | 6        | -591     | 1    | 7        | -810     | 1    | 2        |
| -003     | 1    | 13       | -361     | 3    | 6        | -591     | 1    | 8        |          |      |          |
| -004     | 1    | 13       | -361     | 1    | 9        | -591     | 1    | 10       | 91-011   | 28   | 7        |
| -005     | 1    | 13       | -362     | 3    | 2        | -615     | 3    | 6        | -231     | 1    | 7        |
| -006     | 1    | 13       | -362     | 4    | 11       | -616     | 2    | 9        | -271     | 1    | 8        |
| -007     | 1    | 13       | -363     | 1    | 4        | -661     | 8    | 2        | -406     | 1    | 8        |
| -101     | 1    | 11       | -363     | 3    | 6        | -664     | 10   | 2        | 93-261   | 1    | 8        |
| -103     | 1    | 11       | -363     | 3    | 8        | -711     | 2    | 8        | -406     | 1    | 8        |
| -105     | 1    | 11       | -363     | 1    | 8        | -712     | 2    | 7        | -611     | 2    | 11       |
| -108     | 1    | 11       | -363     | 1    | 2        | -712     | 2    | 8        | -621     | 7    | 5        |
| -109     | 1    | 11       | -364     | 1    | 4        | -712     | 1    | 10       | -621     | 2    | 10       |
| -112     | 1    | 11       | -365     | 3    | 5        | -713     | 1    | 11       |          |      |          |
| -114     | 1    | 11       | -365     | 2    | 7        | -715     | 1    | 10       |          |      |          |
| -117     | 1    | 11       | -366     | 1    | 7        | -715     | 2    | 7        |          |      |          |
| -122     | 1    | 11       | -366     | 1    | 8        | -716     | 1    | 7        |          |      |          |
| -131     | 1    | 11       | -366     | 1    | 8        | -716     | 1    | 10       |          |      |          |
| -133     | 1    | 11       | -366     | 1    | 9        | -716     | 1    | 10       |          |      |          |
| -135     | 1    | 11       | -371     | 1    | 8        | -718     | 2    | 7        |          |      |          |
| -136     | 1    | 11       | -374     | 1    | 4        | -761     | 2    | 8        |          |      |          |
| 79-121   | 1    | 11       | -374     | 1    | 4        | -761     | 2    | 2        |          |      |          |
| -222     | 1    | 11       | -374     | 1    | 12       | -761     | 1    | 2        |          |      |          |
| -236     | 1    | 6        | -379     | 1    | 8        | -763     | 2    | 7        |          |      |          |
| -501     | 1    | 2        | -382     | 1    | 12       | -764     | 1    | 4        |          |      |          |
| -502     | 1    | 2        |          |      |          | -781     | 1    | 11       |          |      |          |
| -571     | 1    | 12       | -382     | 1    | 12       | -812     | 1    | 9        |          |      |          |
| -572     | 1    | 12       |          |      |          | -812     | 1    | 11       |          |      |          |
|          |      |          | -462     | 1    | 2        | -812     | 1    | 7        |          |      |          |
|          |      |          | -464     | 1    | 8        | -814     | 2    | 9        |          |      |          |
|          |      |          | -464     | 2    | 12       | -814     | 1    | 8        |          |      |          |
| 80-751   | 4    | 13       | -511     | 2    | 10       | -831     | 1    | 10       |          |      |          |
| 81-107   | 1    | 5        | -511     | 2    | 8        | -861     | 2    | 2        |          |      |          |
| -112     | 1    | 5        | -511     | 1    | 11       | -862     | 2    | 2        |          |      |          |
| -113     | 1    | 7        | -511     | 2    | 12       | 85-111   | 2    | 10       |          |      |          |
| -121     | 1    | 10       |          |      |          | -112     | 1    | 10       |          |      |          |
| -122     | 1    | 10       |          |      |          | -113     | 5    | 7        |          |      |          |
| -134     | 1    | 5        | -512     | 2    | 11       | -114     | 2    | 7        |          |      |          |
| -135     | 1    | 5        | -512     | 1    | 8        | -132     | 1    | 10       |          |      |          |
| -141     | 2    | 8        | -513     | 1    | 6        | -181     | 2    | 12       |          |      |          |
| -151     | 1    | 5        | -513     | 1    | 12       |          |      |          |          |      |          |
| -151     | 1    | 5        |          |      |          | -181     | 2    | 12       |          |      |          |
| -153     | 1    | 5        | -521     | 1    | 6        |          |      |          |          |      |          |
| -171     | 2    | 10       | -521     | 2    | 19       |          |      |          |          |      |          |
| -201     | 1    | 5        | -521     | 1    | 10       |          |      |          |          |      |          |
| -255     | 1    | 5        | -561     | 1    | 11       |          |      |          |          |      |          |
| -333     | 1    | 5        | -561     | 1    | 11       |          |      |          |          |      |          |

## **MORIMOTO MFG. CO., LTD.**

Megalo Coop Fukushima Bldg. (2F),  
10-19, Fukushima 2-Chome, Fukushima-ku,  
Osaka 553, Japan  
Tel: (06) 451-9127 Telex: 05242193 KSPCAL-J

### **MAIN FACTORY**

180, Suna Shijonawate City, Osaka 575, Japan  
Tel: (0720) 78-1177

### **MORIMOTO MFG. (S) CO. PTE. LTD.**

18A-23A Block 12, 50 Kallang Bahru,  
Kallang Basin Industrial Estate Singapore 12  
Tel: 2938856, 2938880 Telex: RS25138 A/B: MMSPL

### **MORIMOTO MFG. (H.K.) LTD.**

C-22 22nd Floor, Pearl City Mansion, Paterson Street, Hong Kong  
Tel: 5-771631 Telex: 83919 (MOR H.K)